

Smart Home Systems

User Manual



MyLights User Manual

Contents

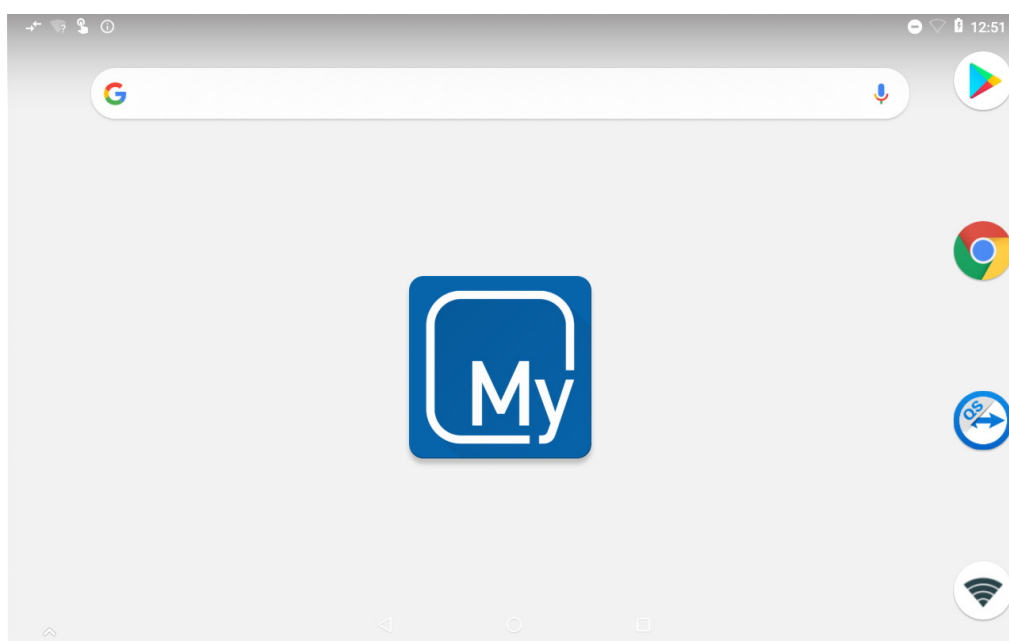
1 - INTRODUCTION	3
2 - CONTROLS	4
3 - HOME PAGE	5
4 - GROUP PAGE	6
5 - SCENES PAGE	7
6 - SCENES EDITOR PAGE	8
7 - EVENTS PAGE	9
8 - EVENT EDITOR PAGE	10
9 - SAMPLE EVENTS SETTING	14
11 - LIGHTS WIZARD	16
12 - OPTIONS PAGE	17

1 - INTRODUCTION

Welcome to your new MyLights smart lighting system.

The information provided in this user manual will help you to get the most from your new lights.

Upon first power up, the system will take a few minutes to initialise. If you walk away from your screen it will go to sleep, to wake the screen simply double tap on a corner of the screen.

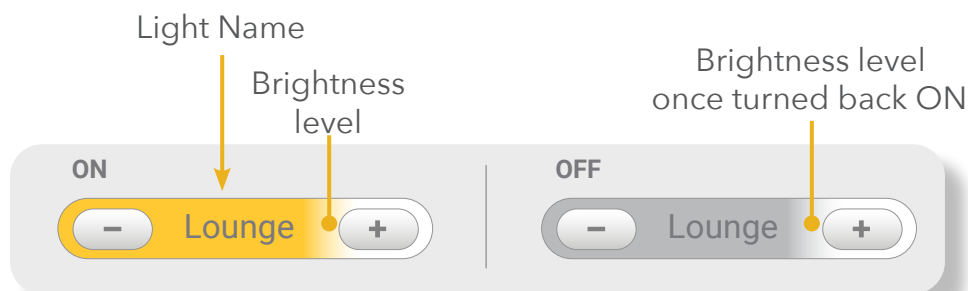


This is your home screen, press the large MyPlace button to start the MyPlace app. Once the MyPlace app has loaded press the yellow MyLights Tab to start controlling your lights.

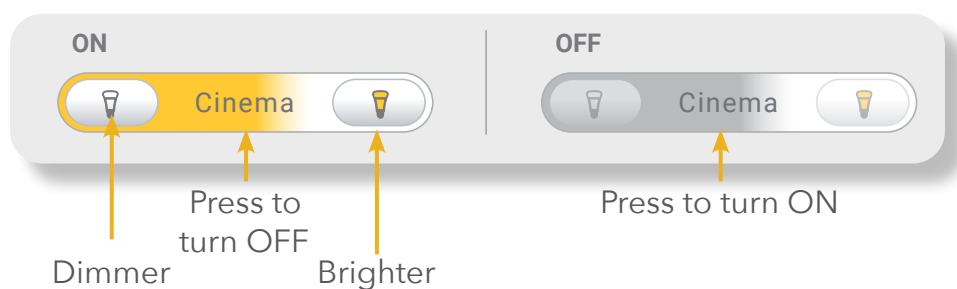
2 - CONTROLS

The following explains the types of buttons or switches that are found in the MyLights system.

Light Button (dimmable)

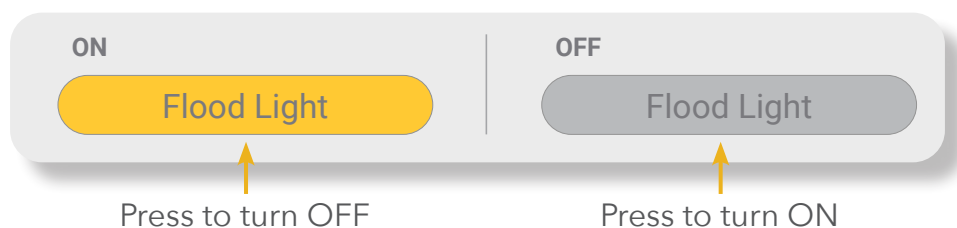


Hue Lights (dimmable)

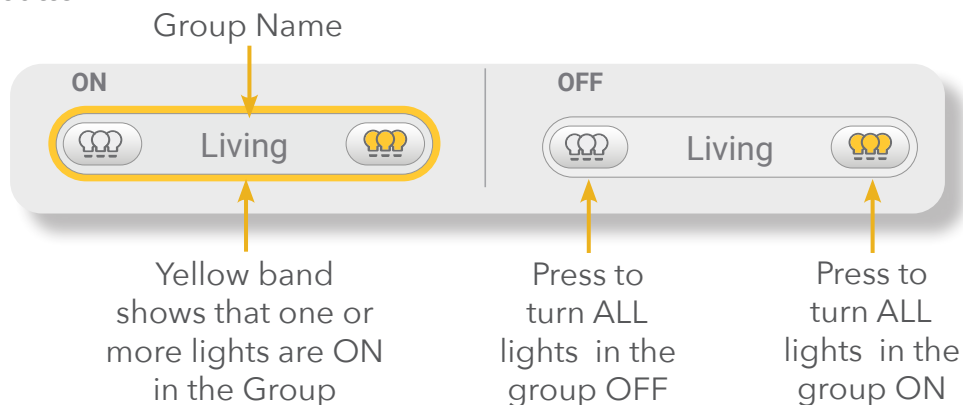


- Flick the light wall switch 4 times for 100% brightness
- Add your Hue Lights by connecting your License Hue bridge in Setup>Options page

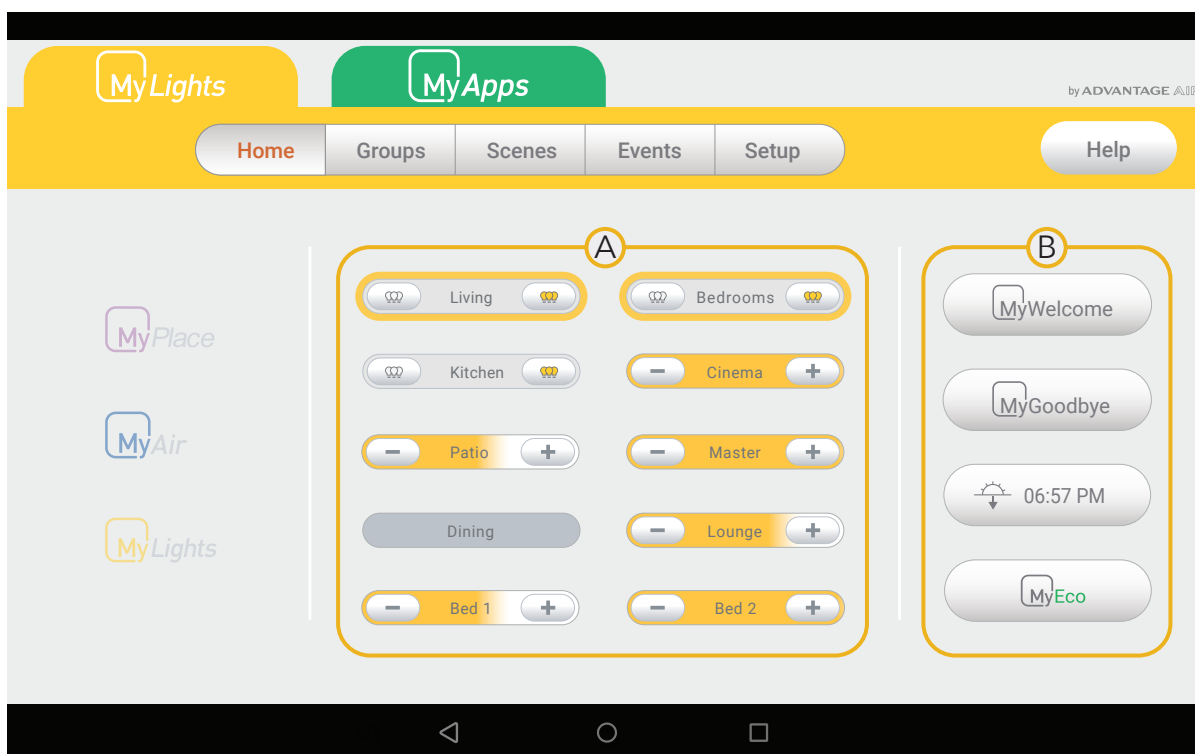
ON/OFF (non dimmable)



Group button



3 - HOME PAGE



A- Favourite Groups and Lights

The middle section of the Home screen displays the most used buttons (device specific). Any groups that have been starred in the Group screen will also be shown in this section. Starred groups will be shown first, followed by the most used light buttons.

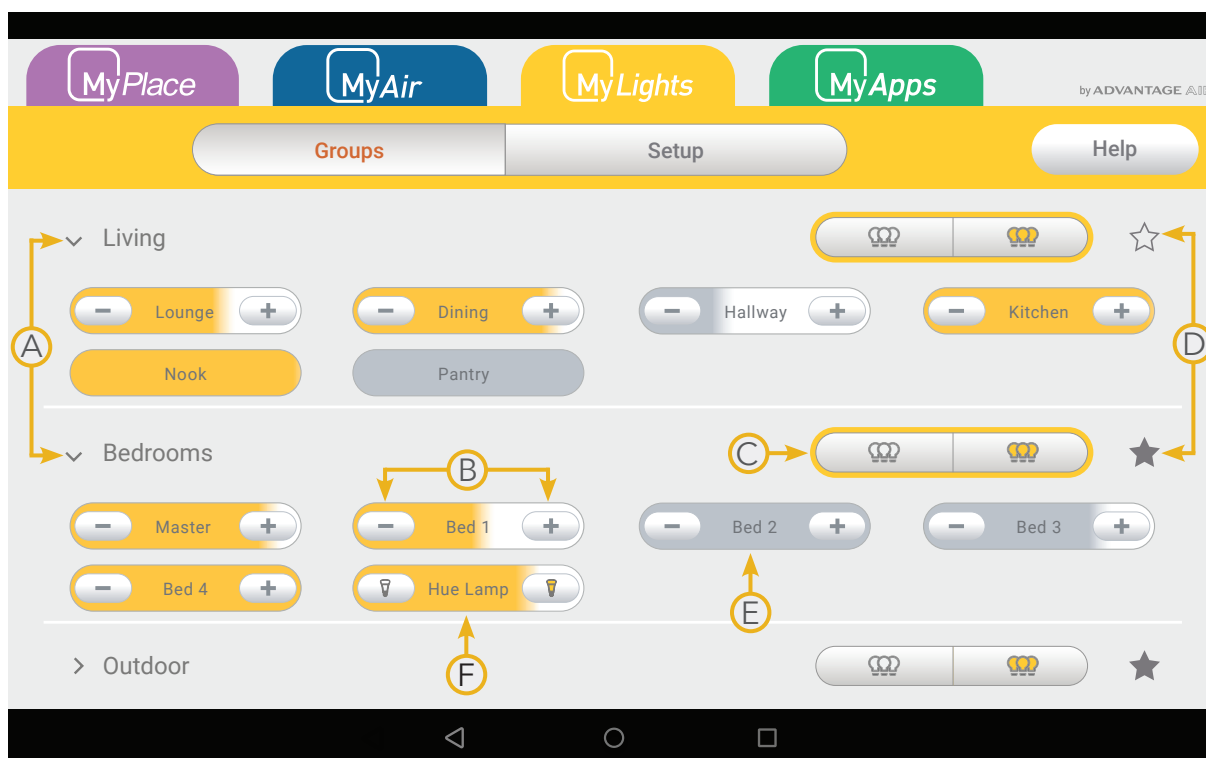
B- Favourite Scenes

These are your four favourite scenes that have been starred from the Scenes screen. The four scenes can be changed at any time by selecting and deselecting the stars on the Scenes screen. Pressing a favourite scene button will run that scene.

NOTE: If you also have MyPlace or MyAir, this homepage will not exist. Instead, you should refer to MyPlace homepage that will include MyPlace, MyAir & MyLights items. This will be your quick access for all of your items in your smart home system.

4 - GROUP PAGE

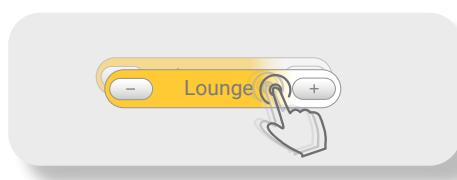
The Groups page enables you to group lights into useful groups, such as creating a group for all of the lights in your bedrooms. This allows you to control all of the grouped lights from a single button.



- A** - Press to expand or collapse group
- B** - Press the dimmable light button to change brightness level
- C** - Press the group button to change the status of all items in the group
- D** - Press the star button to pin a group to the favourites section of MyPlace Home
- E** - Press to turn the light ON or OFF
- F** - Requires license hue bridge and lights

Groups can be created, renamed or deleted through the Manage Groups button found on the Setup screen. Up to 10 groups can be created.

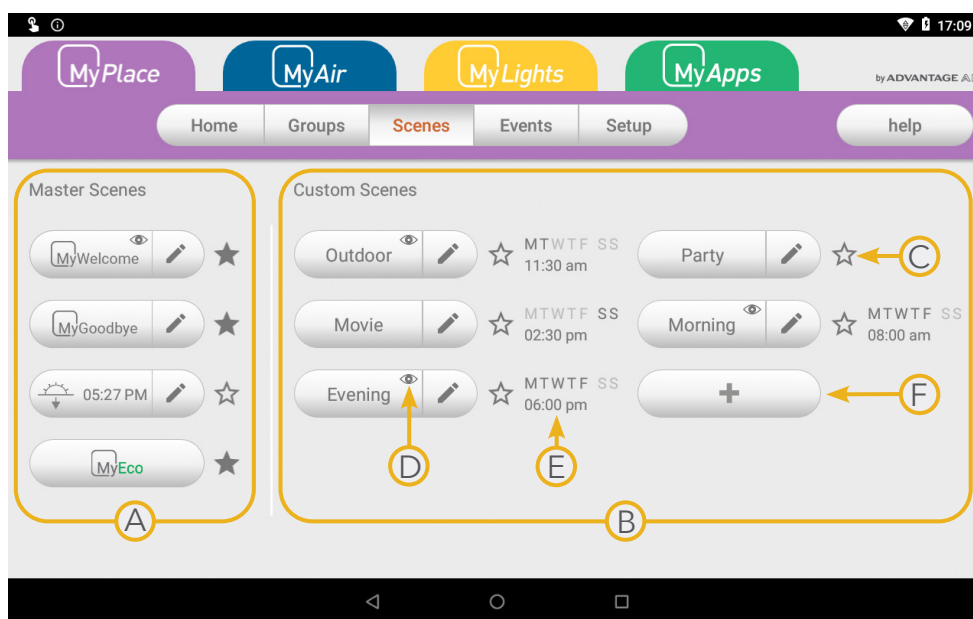
Pressing and holding on a switch icon in the Group screen will allow you to drag the switch into a new position or group.



5 - SCENES PAGE

Scenes allow you to set the aircon, lights and other items, the way you want them from a single button. Scenes can be triggered by manually pressing the Scene button or enabling the scene to run in certain day and time.

NOTE: Scenes can be found under MyPlace tab if you have multiple tabs.



A - Master Scenes

There are 4 master scenes that perform preconfigured functions as follows;

- MyWelcome - Turns ON all lights in the system
- MyGoodbye - Turns OFF all the lights
- MyEco - Saves energy by dimming all the dimmable lights to 80%
- MySunset - Turns on all the lights at sunset.

NOTE: All Master scenes except MyEco can be edited from your wall mounted touch screen by pressing the Edit (pencil) button.

B - Custom Scenes

You can add up to 12 custom scenes.

C - Press the star button to pin a group to the favourites scenes section of MyPlace Home

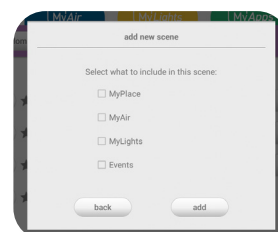
D - This shows that the events is included in the scene

E - This shows the day and time when the scene will run automatically.

F - Creating a Custom Scene

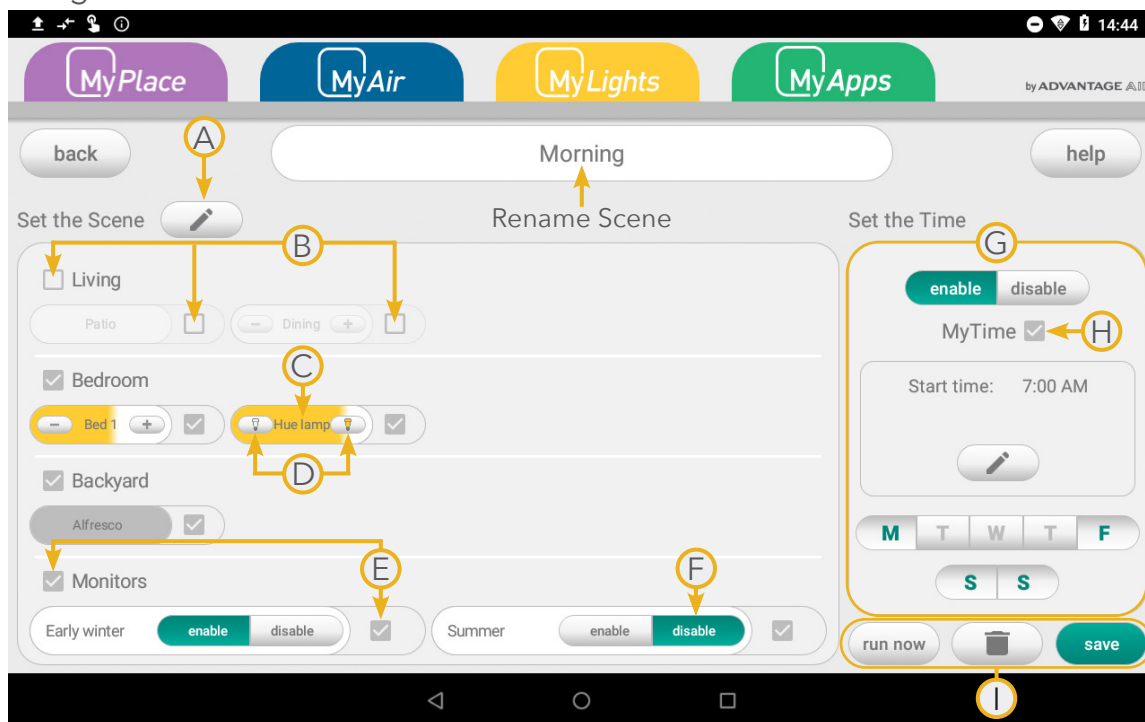
To create a new Custom Scene press the + button. This will bring up the Scene Editor screen.

If you also have multiple tabs, you can select which of them you want to add and configure in the scene.



6 - SCENES EDITOR PAGE

The Scene Editor screen as shown below is where you can configure any new or existing scenes.



Set the Scene Window

This window allows you to control what the scene will do to your aircon, lights and other items when it runs.

- A** - If you have MyAir or MyLights, you can add or remove them to this scene.
- B** - Unticked Groups and Buttons will be ignored when the scene runs.
- C** - Press to change the light state.
- D** - Press to change the brightness level.
- E** - Ticked Groups and Buttons are included in the scene.
- F** - Highlighted Buttons indicate what will happen when the scene runs.

G - Set the Time Window

This window allows you to set a time and choose which days for your scene to run. The schedule can be enabled and disabled.

H - MyTime

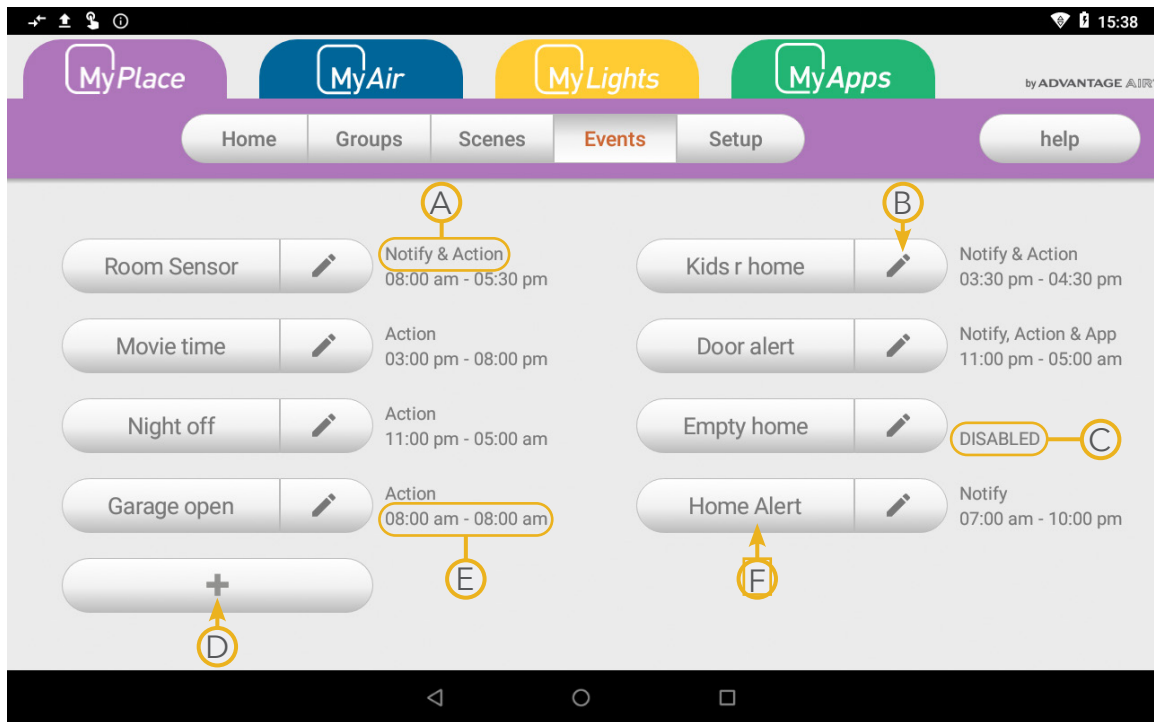
MyTime allows you to slowly turn on the dimmable lights at a set time. Press the checkbox to enable or disable MyTime.

I - Saving, Running and Deleting a Scene

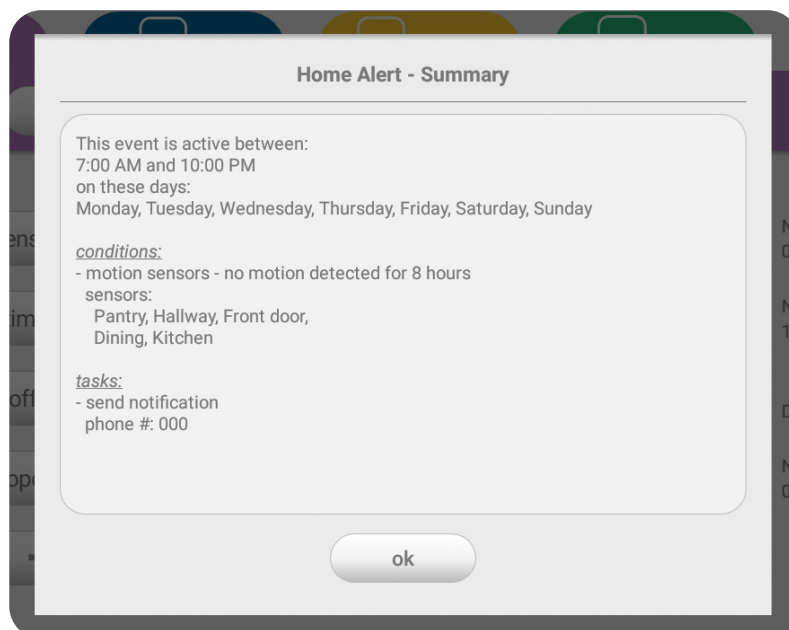
All changes to a Scene must be saved by pressing the save button. You can run a scene from the editor screen pressing the "Run Now" button. If the scene is no longer needed then it can be deleted by pressing the trash button.

7 - EVENTS PAGE

Events give you the ability to set and run 'tasks' when specific events happen around your home during a designated period of time.



- A** - This shows what task is enabled on this event.
- B** - Press to edit an event.
- C** - This shows when an event is disabled.
- D** - Press the button to create an event.
- E** - This shows the time when an event is active.
- F** - Press the event name to display the summary of the event.



8 - EVENT EDITOR PAGE

Events will monitor the selected event(s) during the selected time period and day(s). When the conditions are met, the selected task will run.

NOTE: Make sure your wall mounted touchscreen is connected to your Wi-Fi. To start creating an event, set your post code first in options page.



A- Conditions

These are the conditions that need to be met first before a task will trigger.

- **Multiple Occurrence** - this can triggers the task multiple times.
- **Single Occurrence** - this can triggers the task once per day. You can select multiple "single occurrence" conditions and all of them must be met for task to trigger.

B- Tasks

These are the actions that will take place when an condition(s) was satisfied. Please follow this [link](#) for more information.

C- Active Times

These is where you set the schedule when the event will be active.

D- Trash Button

Press to delete the event.

E- Save Button

Press to save and exit the event.

8 - EVENT EDITOR PAGE

Conditions > Multiple Occurrence

Motion Sensors

This condition will be satisfied when there is motion or no motion detected. This is only applicable if you have motion sensor added in your Licensed Hue Bridge.

The screenshot shows the 'Conditions' editor for Motion Sensors. It includes the following elements and annotations:

- Conditions:**
 - Motion sensors
- Trigger:**
 - On motion
 - On no motion for **2 mins**

Annotations:

 - 'Motion was detected' points to 'On motion'.
 - 'No motion was detected' points to 'On no motion for'.
 - 'The idle time of motion sensor. It can be set from 2 mins to 24 hours' points to '2 mins'.
- Sensors:**
 - Hallway
 - Bedroom
 - Pantry
 - Garage
 - Cinema

Annotation: 'Selected sensor' points to 'Hallway'.
- Light Sensitivity:**
 - when light level on the sensor is
 - or

Annotation: 'Light level condition where the event can trigger' points to 'dim'.

Annotation: 'The light sensitivity can be set to any level or a range of light level' points to 'below'.

Garage Door

This condition will be satisfied when any garage door is opened or closed. This only applicable if you have MyGarage module of MyPlace.

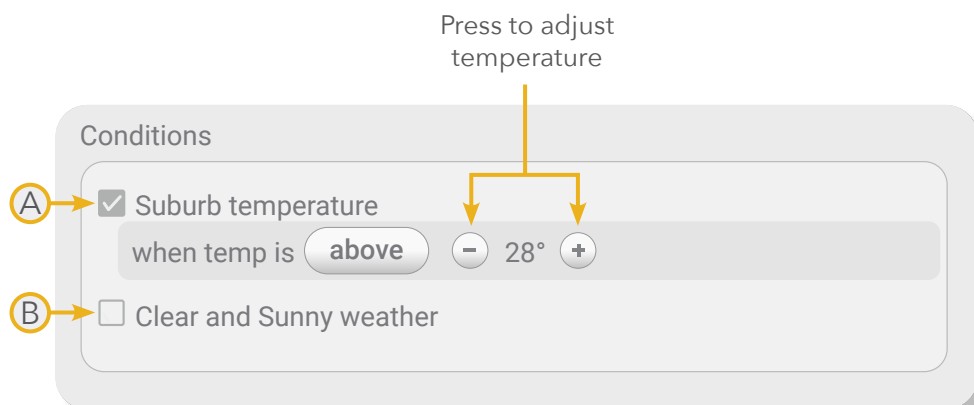
The screenshot shows the 'Conditions' editor for Garage Door. It includes the following elements and annotations:

- Conditions:**
 - Motion sensors
 - Garage door
- When any garage door is**

Annotation: 'The status of garage door can be set to opened or closed' points to 'opened'.

8 - EVENT EDITOR PAGE

Conditions > Single Occurrence

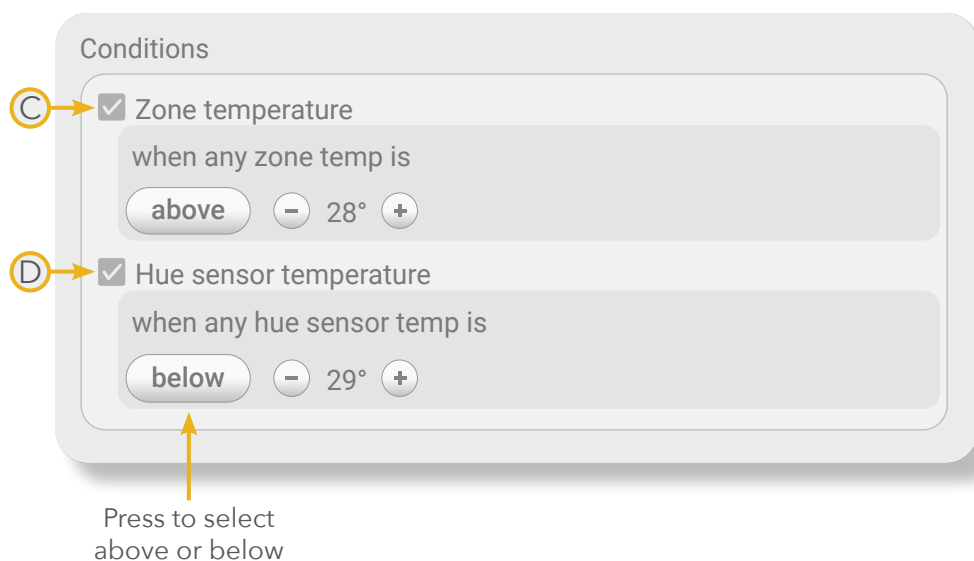


A - Suburb temperature

This condition will be satisfied when the current temperature of your location is above or below the set temperature.

B - Clear and Sunny weather

This condition will be satisfied when the forecast in your location is "Sunny" or "Clear".



C - Zone temperature

This condition will be satisfied when the zone temperature is above or below the set temperature.

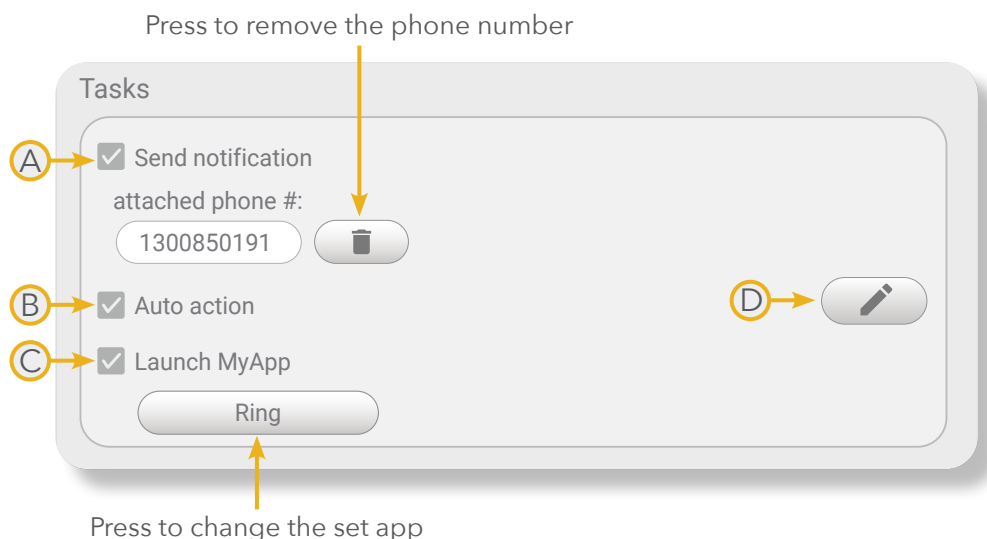
D - Hue sensor temperature

This condition will be satisfied when the hue sensor temperature is above or below the set temperature. This requires a Licensed Hue Bridge.

8 - EVENT EDITOR PAGE

Tasks

These are the tasks that will run after the condition(s) is satisfied.



A- Send Notification

This task will send a notification to all paired phones. When you set a phone number in this task, a call button will appear after opening the notification. This will give you an option to have a quick call to the phone number set.

NOTE: The notification will not go to the number set. The number set will show in the notification on your paired phones.

B- Auto action

This task will initiate your things to run according to the set configurations.

C- Launch MyApp

This task will open an app. If you open a notification in your phone, the app will load if it exist.

D- Edit Auto action

Press to edit the auto action.

NOTE: Don't forget to press the  button to save the configuration made in the auto action.

9 - SAMPLE EVENTS SETTING

When you want the lights to turn ON in your hallway only when its dim or dark

- turn ON lights

Event Name: Hallway ON

Condition	Task	Active Times
<p>Motion sensor - on motion</p> <p>Sensors: Hallway</p> <p>when sensor light level is dim or below</p>	<p>Auto action</p> <p><u>Auto action configuration</u></p> <p>MyLights: <u>will turn on:</u> Hallway</p>	<p>This event is active between: 9:00 PM and 5:00 PM</p> <p>On these days: Monday, Tuesday, Wednesday, Thursday, Friday, Saturday, Sunday</p>

When you want to save energy

- Turn OFF aircon and all lights when there is no motion at home for 1 hour
- move down all blinds in your home

Event Name: Empty home

Condition	Task	Active Times
<p>Motion sensor - no motion detected for 1 hour</p> <p>Sensors: Bedroom, Hallway, Living, Home office, Cinema room</p>	<p>Auto action</p> <p><u>Auto action configuration</u></p> <p>MyAir: Aircon: off</p> <p>MyLights: <u>will turn off:</u> Hue lamp, Cinema room, Master, Hallway, Kitchen, Dining, Bed 1, Bed 2, Bed 3, Guest room</p> <p>MyPlace: <u>Will move down:</u> Cinema room, Master, Hallway, Dining, Bed 1, Bed 2, Bed 3, Guest room</p>	<p>This event is active between: 9:00 AM and 10:00 PM</p> <p>On these days: Monday, Tuesday, Wednesday, Thursday, Friday, Saturday, Sunday</p>

10 - SETUP PAGE

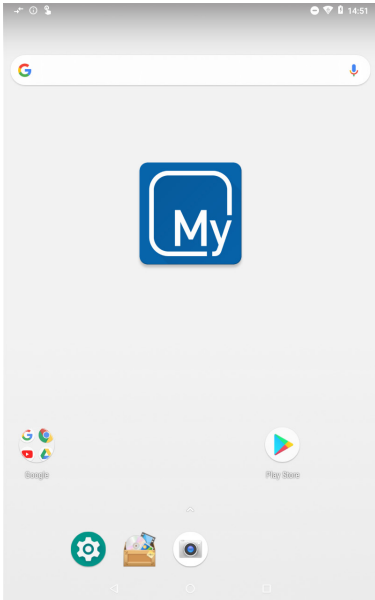
The Setup Screen allows you to configure your MyPlace system. From this screen you can perform the following actions:



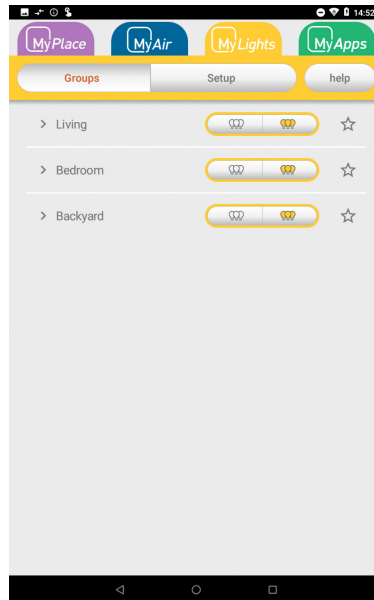
- A** - Rename motion sensors, garage, blinds and other items
- B** - Configure MyPlace settings
- C** - Enable / Disable Remote Access
- D** - Manage Groups (create, rename & delete)
- E** - Advanced Information about your system
- F** - Status messages and codes will appear here

11 - LIGHTS WIZARD

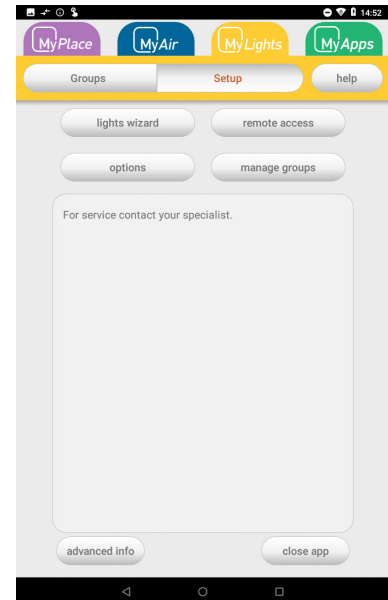
The lights wizard allows you to rename lights, setup new groups and join lights to groups.



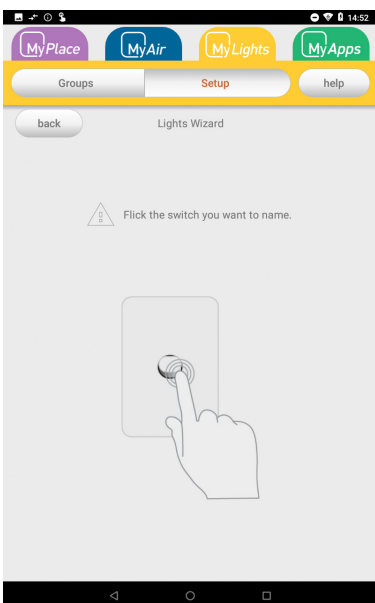
1. Press the **My** app located on the home screen of your MyLights tablet.



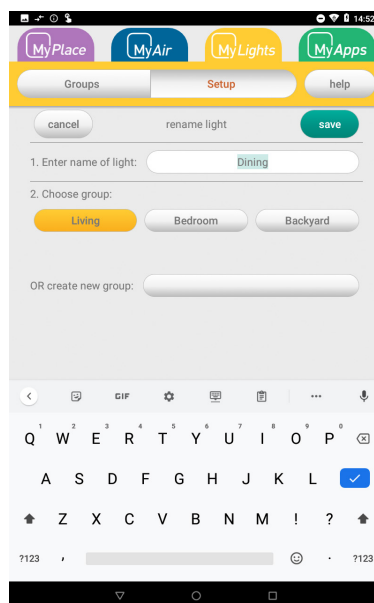
2. Press the yellow MyLights tab and then press the Setup button in the menu.



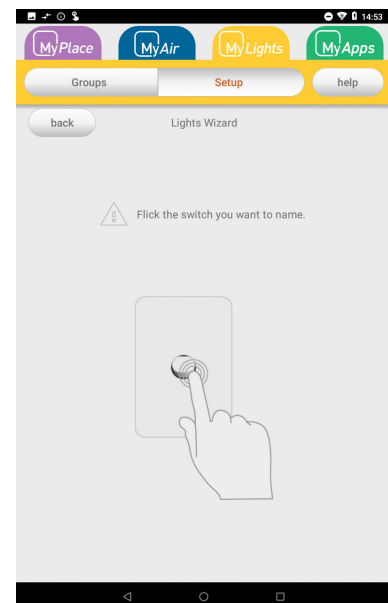
3. Press the LIGHTS WIZARD button.



4. Flick the wall light switch that you would like to (re)name.

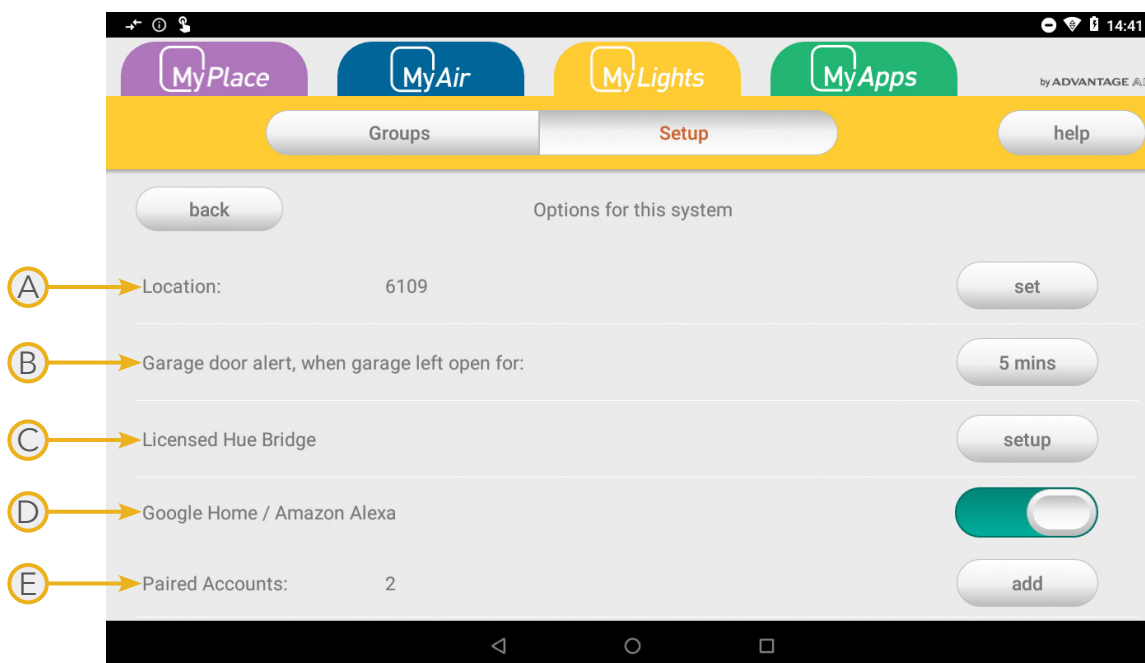


5. Name the light switch & select the group you would like it to join, then press save.



6. Proceed with naming & grouping all other lights.

12 - OPTIONS PAGE



A- Location

Set your suburb post code for MySunset and MyMonitors to work properly.

B- Garage door alert

Set how long the garage is left open before it send an alert. It will continue to send notification every 30 minutes until the garage door is closed.

C- Licensed Hue Bridge

Connect your Licensed Hue Bridge to MyPlace.

D- Google Home or Amazon Alexa

Enable or disable Smart Khaya

E- Paired Accounts

Link your account to Smart Khaya to Google Home or Amazon Alexa

ADVANTAGE AIR®

The advantage of Australian-made

MyLights is designed by Advantage Air, an Australian company based in Perth, Western Australia. Since 1990, we've been dedicated to making peoples' lives more comfortable.

We started with designing and manufacturing innovative ducted air-conditioning systems. The connected smart home, like smart lighting, is the natural evolution of helping you create an environment where everything is exactly the way you like it.

We take pride in creating and exporting a local product that is world class. To achieve this, we embrace technology and invest heavily in research and development. Our ingenious engineers have developed numerous industry firsts and earned us a slew of patents, registered designs and design awards in the process.

We are committed to quality and where possible, make our components in Australia. Like MyAir, your MyLights system is built to last. The only thing that shines brighter than our lights? Our service.

5-Year Warranty

Advantage Air components are well known in the industry for their quality and durability. To prove our confidence, we provide a 5-year warranty on all electronic controls.

Corporate responsibility

Advantage Air is all about bringing comfort to people. We are proud to be a sponsor of Channel 9's Matt & Kim to the rescue. The show delivers life-changing renovations to families in desperate need.

ADVANTAGE AIR®

Australia

Perth

Advantage Air AUST Pty Ltd
115 Vulcan Road, Canning Vale
Western Australia 6155

T: 1300 850 191

E: techsupport@advantageair.com.au

Brisbane

Advantage Air (QLD) Pty Ltd
359 Fison Avenue East, Eagle
Farm, Queensland 4009

Sydney

Advantage Air (NSW) Pty Ltd
7/10 Anella Avenue, Castle Hill,
New South Wales 2154

For further assistance, call our MyTeam Support on 1300 850 191, Mon-Fri from 6am to 5pm WST.

Advantage Air Aust Pty Ltd reserves the right to change specifications, modify designs and discontinue items. Whilst we try to keep every detail in this document current and accurate, if there are differences or changes then Advantage Air shall not be liable for these.