



HiLook

PRODUCT CATALOG

IP Solution
Turbo HD Solution
Transmission

HiLook

Great View, Great Value

PRODUCT CATALOG

2020 H1

IP Solution / Turbo HD Solution / Transmission

2020 H1



HiLook

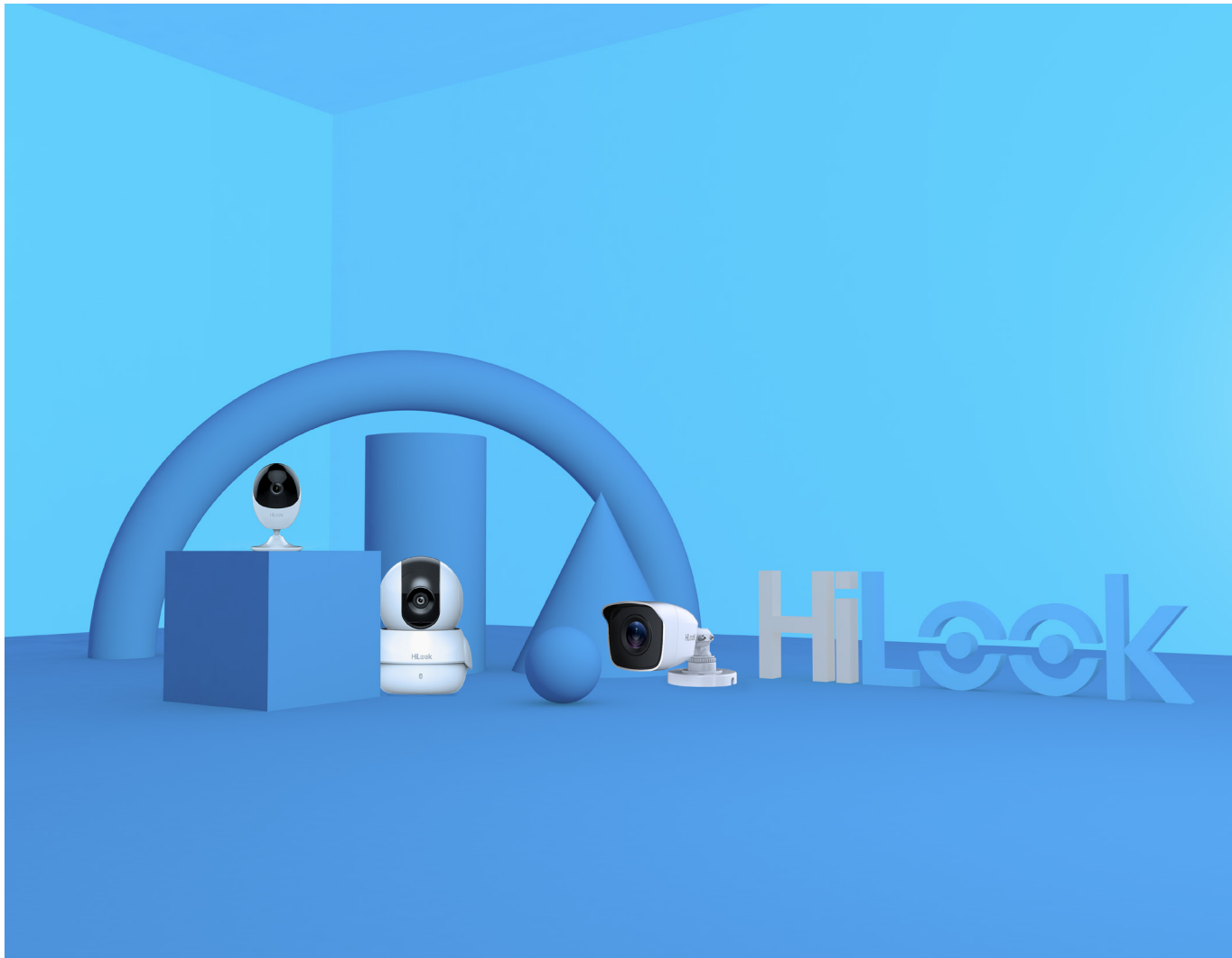


Table of Contents

HiLook Overview	1
<hr/>	
Key Features	
Safe and Sound	4
See Who's There, Wherever and Whenever	8
Click and Connect	9
<hr/>	
Product Showcase	
IP Solution	12
Turbo HD Solution	25
Transmission Products	41
Accessories	43
<hr/>	



VIDEO SECURITY SOLUTION

Looking for High Performance? Looking for Low Price? Look at HiLook. HiLook, Hikvision's offshoot brand, hits the bullseye for the entry-level video security market, providing very cost-effective, easy-to-use and reliable products and services.



RELIABLE
QUALITY



EASE OF USE



ATTRACTIVE
PRICE

DIVERSE PRODUCT LINES FOR VARIOUS DEMANDS

HiLook offers an extensive portfolio of products and solutions to meet the wide range of user demands.

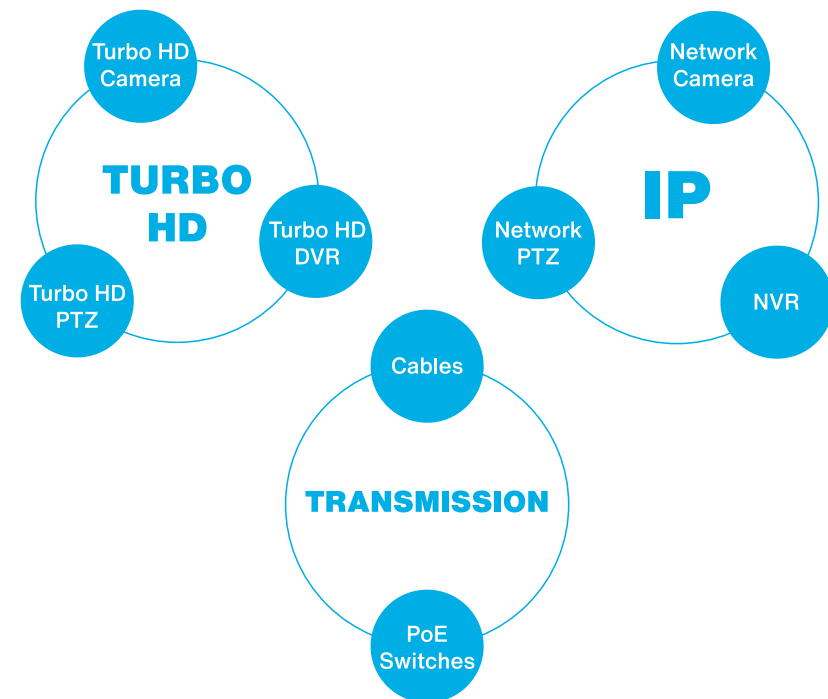
IP Solution: Network Cameras, Network PTZ Cameras, NVRs

Turbo HD Solution:

Turbo HD Cameras, Turbo HD PTZ Cameras, Turbo HD DVRs

Transmission: Switches, Coaxial Cables, Network Cables

Expect even more product lines under the HiLook brand in the near future.





OUTSTANDING PRODUCT QUALITY

The superior cost-efficiency of HiLook products does not imply any compromise in product quality, which are guaranteed by:

- Over 80% automated manufacturing
- Options for more durable materials such as full metal
- Comprehensive authoritative certifications of the industry
- Stringent tests for ingress protection, vandal resistance, aging, etc.



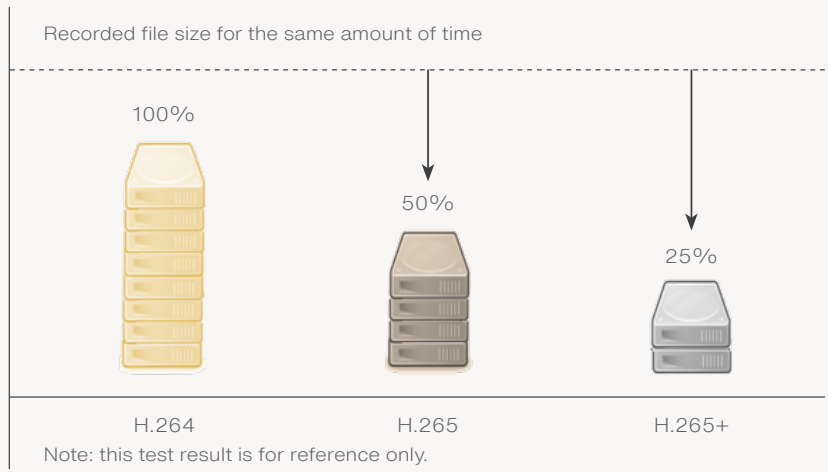
SAFE AND SOUND

Ever So Clear

Cameras with resolutions up to 5 MP capture rich details with wider coverage, providing strong evidence for post-event search.



Prolonged HD recordings enabled by the H.265+ smart codec provides more details to find the right evidence users might have forgotten.





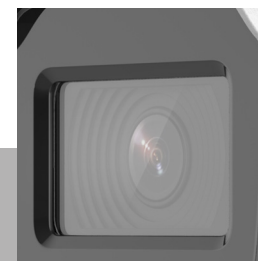
Ever So Bright

The ColorVu technology ensures 24/7 colorful imaging even in dim light conditions, providing a safer night environment for everyone – and available at affordable prices.

Note: refer to page 23 and page 35 for product specifications.

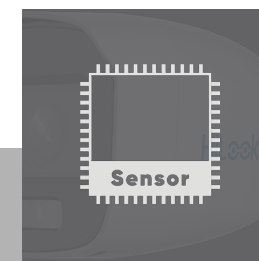


Combining Great Technologies
for Greater Image Quality



F1.0 Super Aperture

- Collects more light to produce brighter image.



Advanced Sensor

- Vastly improves the utilization of available light.



Friendly Lighting

- Soft and warm supplemental light works to guarantee colorful images when in zero-light environments.



Ever So Evident

Integrating audio into CCTV security system is a groundbreaking advancement, providing users with more situational awareness and more evidence after an event. Combining audio and video enhances security and will be universal for the video security industry in the future.



SEE WHO'S THERE, WHEREVER AND WHENEVER

The HiLookVision app allows live viewing from anywhere and at any time via smart phones, and sends timely notifications and alarms to end-users when events occur.



Users can also stream the live feed using the HiLookVision PC Client or monitors connected to a DVR or NVR for more details and better viewing experience.

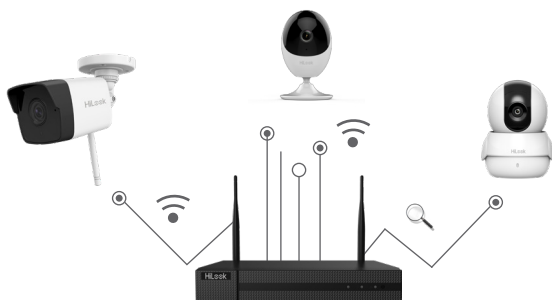


With select NVR models that allow separate video channel output to more than one monitors, you can monitor multiple channels simultaneously and more conveniently.



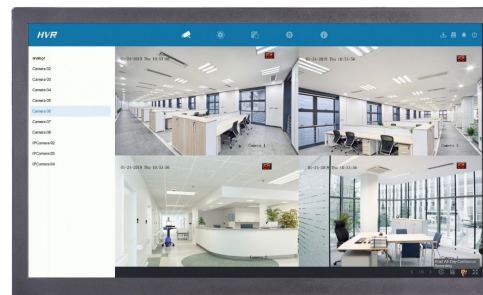
CLICK AND CONNECT

With HiLook, a professional video security system can be easy. Users can choose and install Wi-Fi products by themselves. The Wi-Fi match function allows automatic connection between cameras and the NVR.



For users preferring non-Wi-Fi products, plug-and-play systems are also available either with PoE models or analog products. Automatic connection is supported by all HiLook products, non-PoE models included.

As a compact solution for the SSMB market, HiLook offers the simplest solutions for security management.



- Simple and concise design with only five necessary models on the dashboard header, making it easier for users to view live, search, and set alarm schedules when needed.

E-UI: Efficient User Interface for HiLook NVRs and DVRs

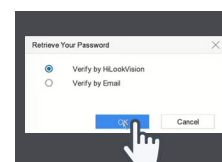
Forgot a Password? Just Scan and Reset

Users can reset their NVR or DVR password using the HiLookVision app with a registered account that is bound with their device account. Resetting a password via email is also supported. Both methods are simple and safe.



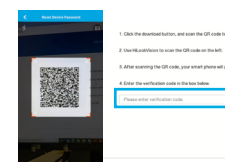
01

Choose "Verify with HiLookVision"



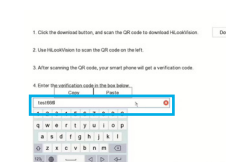
02

Scan the QR code on the GUI and get a verification code



03

Key in the verification code and reset password



Tips: The HiLookVision account needs to be bound with devices in advance, so we highly recommend binding the device to your HiLookVision app account during activation.



PRODUCT SHOWCASE

IP SOLUTION

TURBO HD SOLUTION

TRANSMISSION PRODUCTS

ACCESSORIES



IP SOLUTION

HiLook IP cameras render up to 5 MP, super-HD imaging with an optimized bandwidth via its highly efficient H.265+ video compression. The Wi-Fi models feature flexible, nearly-effortless installation and quick connection for instant view. With no difficult IP setup and only one cable for power and data, the PoE feature connects cameras and NVRs quickly and easily. And the NVRs ensure smooth live view and fluid playback through reliable video recording and management. HiLook is perfect for small business security.



IPC-B150H
5 MP Fixed-lens
Bullet

- Up to 5 MP high resolution
- 2.8 or 4 mm fixed lens
- Supports H.265+/H.265, H.264+/H.264
- IR Range: Up to 30 m
- IP67, 120 dB WDR
- Supports PoE
- Front Cover: Metal
- Back Cover & Bracket: Plastic



IPC-B150H-M
5 MP Fixed-lens
Bullet

- Up to 5 MP high resolution
- 2.8 or 4 mm fixed lens
- Supports H.265+/H.265, H.264+/H.264
- IR Range: Up to 30 m
- IP67, 120 dB WDR
- Supports PoE
- Front Cover: Metal
- Back Cover & Bracket: Metal



IPC-D650H-V/Z
5 MP Varifocal
Dome

- Up to 5 MP high resolution
- 2.8 to 12 mm varifocal lens
- Supports H.265/H.265+, H.264/H.264+
- IP67, IK10, 120 dB WDR
- IR Range: Up to 30 m
- Supports PoE & TF card slot
- -V: manual varifocal lens,
- -Z: motorized varifocal lens



IPC-T651H-Z
5 MP Varifocal
Turret

- Up to 5 MP high resolution
- 2.8 to 12 mm varifocal lens
- Supports H.265+/H.265, H.264+/H.264
- IP67, 120 dB WDR
- IR Range: Up to 30 m
- Supports PoE & TF card slot
- Motorized varifocal lens
- Camera Body: Metal, Bottom Base: Plastic



IPC-D150H
5 MP Fixed-lens
Dome

- Up to 5 MP high resolution
- 2.8 or 4 mm fixed lens
- Supports H.265+/H.265, H.264+/H.264
- IR Range: Up to 30 m
- IP67, IK10, 120 dB WDR
- Supports PoE
- Base: Metal, Cover: Plastic



IPC-D150H-M
5 MP Fixed-lens
Dome

- Up to 5 MP high resolution
- 2.8 or 4 mm fixed lens
- Supports H.265+/H.265, H.264+/H.264
- IR Range: Up to 30 m
- IP67, IK10, 120 dB WDR
- Supports PoE
- Base: Metal, Cover: Metal



IPC-B141H
4 MP Fixed-lens
Bullet

- Up to 4 MP high resolution
- 2.8 or 4 mm fixed lens
- Supports H.265+/H.265, H.264+/H.264
- IR Range: Up to 30 m
- IP67, DWDR
- Supports PoE
- Front Cover: Metal
- Back Cover & Bracket: Plastic



IPC-B140H
4 MP Fixed-lens
Bullet

- Up to 4 MP high resolution
- 2.8 or 4 mm fixed lens
- Supports H.265+/H.265, H.264+/H.264
- IR Range: Up to 30 m
- IP67, 120 dB WDR
- Supports PoE
- Front Cover: Metal
- Back Cover & Bracket: Plastic

HOT



IPC-T250H
5 MP Fixed-lens
Turret

- Up to 5 MP high resolution
- 2.8 or 4 mm fixed lens
- Supports H.265+/H.265, H.264+/H.264
- IR Range: Up to 30 m
- IP67, 120 dB WDR
- Supports PoE
- Camera Body: Metal, Bottom Base: Plastic



IPC-B650H-V/Z
5 MP Varifocal
Bullet

- Up to 5 MP high resolution
- 2.8 to 12 mm varifocal lens
- Supports H.265/H.265+, H.264/H.264+
- IP67, 120 dB WDR
- IR Range: Up to 30 m
- Supports PoE & TF card slot
- -V: manual varifocal lens
- -Z: motorized varifocal lens



IPC-B140H-M
4 MP Fixed-lens
Bullet

- Up to 4 MP high resolution
- 2.8 or 4 mm fixed lens
- Supports H.265+/H.265, H.264+/H.264
- IR Range: Up to 30 m
- IP67, 120 dB WDR
- Supports PoE
- Front Cover: Metal
- Back Cover & Bracket: Metal



IPC-D141H
4 MP Fixed-lens
Dome

- Up to 4 MP high resolution
- 2.8 or 4 mm fixed lens
- Supports H.265/H265+, H.264/H.264+
- IR Range: Up to 30 m
- IP67, IK10, DWDR
- Supports PoE
- Base: Metal, Cover: Plastic



IPC-D140H
4 MP Fixed-lens
Dome

HOT

- Up to 4 MP high resolution
- 2.8 or 4 mm fixed lens
- Supports H.265/H265+, H.264/H.264+
- IR Range: Up to 30 m
- IP67, IK10, 120 dB WDR
- Supports PoE
- Base: Metal, Cover: Plastic



IPC-D140H-M
4 MP Fixed-lens
Dome

- Up to 4 MP high resolution
- 2.8 or 4 mm fixed lens
- Supports H.265+/H.265, H.264+/H.264
- IR Range: Up to 30 m
- IP67, IK10, 120 dB WDR
- Supports PoE
- Base: Metal, Cover: Metal



IPC-T641H-Z
4 MP Varifocal
Turret

- Up to 4 MP high resolution
- 2.8 to 12 mm varifocal lens
- Supports H.265+/H.265, H.264+/H.264
- IP67, 120 dB WDR
- IR Range: Up to 30 m
- Supports PoE & TF card slot
- Motorized varifocal lens
- Camera Body: Metal, Bottom Base: Plastic



IPC-T241H
4 MP Fixed-lens
Turret

- Up to 4 MP high resolution
- 2.8 or 4 mm fixed lens
- Supports H.265/H265+, H.264/H.264+
- IR Range: Up to 30 m
- IP67, DWDR
- Supports PoE
- Camera Body: Metal, Bottom Base: Plastic



IPC-T240H
4 MP Fixed-lens
Turret

HOT

- Up to 4 MP high resolution
- 2.8 or 4 mm fixed lens
- Supports H.265/H265+, H.264/H.264+
- IR Range: Up to 30 m
- IP67, 120 dB WDR
- Supports PoE
- Camera Body: Metal, Bottom Base: Plastic



IPC-B129H
2 MP Fixed-lens
ColorVu Bullet

NEW

- Up to 2 MP high resolution
- 2.8 or 4 mm fixed lens
- Supports H.265+/H.265, H.264+/H.264
- White Light Range: Up to 30 m
- IP67, DWDR
- Supports PoE
- Front Cover: Metal
- Back Cover & Bracket: Metal



IPC-T229H
2 MP Fixed-lens
ColorVu Turret

NEW

- Up to 2 MP high resolution
- 2.8 or 4 mm fixed lens
- Supports H.265+/H.265, H.264+/H.264
- White Light Range: Up to 30 m
- IP67, DWDR
- Supports PoE
- Camera Body: Metal, Bottom Base: Plastic



IPC-B640H-V/Z
4 MP Varifocal
Bullet

HOT

- Up to 4 MP high resolution
- 2.8 to 12 mm varifocal lens
- Supports H.265+/H.265, H.264+/H.264
- IP67, 120 dB WDR
- IR Range: Up to 30 m
- Supports PoE & TF card slot
- -V: manual varifocal lens
- -Z: motorized varifocal lens



IPC-D640H-V/Z
4 MP Varifocal
Dome

HOT

- Up to 4 MP high resolution
- 2.8 to 12 mm varifocal lens
- Supports H.265/H.265+, H.264/H.264+
- IP67, IK10, 120 dB WDR
- IR Range: Up to 30 m
- Supports PoE & TF card slot
- -V: manual varifocal lens
- -Z: motorized varifocal lens



IPC-B121H
2 MP Fixed-lens
Bullet

- Up to 2 MP high resolution
- 2.8 or 4 mm fixed lens
- Supports H.265+/H.265, H.264+/H.264
- IR Range: Up to 30 m
- IP67, DWDR
- Supports PoE
- Front Cover: Metal
- Back Cover & Bracket: Plastic



IPC-B121H-M
2 MP Fixed-lens
Bullet

- Up to 2 MP high resolution
- 2.8 or 4 mm fixed lens
- Supports H.265+/H.265, H.264+/H.264
- IR Range: Up to 30 m
- IP67, DWDR
- Supports PoE
- Front Cover: Metal
- Back Cover & Bracket: Metal



IPC-B120H-U
2 MP Fixed-lens
Bullet

HOT

- Up to 2 MP high resolution
- 2.8 or 4 mm fixed lens
- Supports H.265+/H.265, H.264+/H.264
- IR Range: Up to 30 m
- IP66, DWDR
- Supports PoE
- Front Cover: Metal
- Back Cover & Bracket: Plastic
- Audio: Built-in microphone



IPC-D121H
2 MP Fixed-lens
Dome

HOT

- Up to 2 MP high resolution
- 2.8 or 4 mm fixed lens
- Supports H.265+/H.265, H.264+/H.264
- IR Range: Up to 30 m
- IP67, IK10, DWDR
- Supports PoE
- Base: Metal, Cover: Plastic



PC-B620H-V/Z
2 MP Varifocal
Bullet

- Up to 2 MP high resolution
- 2.8 to 12 mm varifocal lens
- Supports H.265+/H.265, H.264+/H.264
- IP67, DWDR
- IR Range: Up to 30 m
- Supports PoE & TF card slot
- -V: manual varifocal lens
- -Z: motorized varifocal lens



IPC-D720H-V/Z
2 MP Varifocal
Dome

- Up to 2 MP high resolution
- 2.8 to 8 mm varifocal lens
- Supports H.265+/H.265, H.264+/H.264
- IP66, DWDR
- IR Range: Up to 20 m
- Supports PoE & TF card slot
- -V: manual varifocal lens
- -Z: motorized varifocal lens
- Audio: Built-in Microphone



IPC-D121H-M
2 MP Fixed-lens
Dome

- Up to 2 MP high resolution
- 2.8 or 4 mm fixed lens
- Supports H.265+/H.265, H.264+/H.264
- IR Range: Up to 30 m
- IP67, IK10, DWDR
- Supports PoE
- Base: Metal, Cover: Metal



IPC-T221H
2 MP Fixed-lens
Turret

- Up to 2 MP high resolution
- 2.8 or 4 mm fixed lens
- Supports H.265+/H.265, H.264+/H.264
- IR Range: Up to 30 m
- IP67, DWDR
- Supports PoE
- Camera Body: Metal, Bottom Base: Plastic



IPC-D620H-V/Z
2 MP Varifocal
Dome

- Up to 2 MP high resolution
- 2.8 to 12 mm varifocal lens
- Supports H.265/H.265+, H.264/H.264+
- IP67, IK10, DWDR
- IR Range: Up to 30 m
- Supports PoE & TF card slot
- -V: manual varifocal lens
- -Z: motorized varifocal lens



IPC-T621H-Z
2 MP Varifocal
Turret

- Up to 2 MP high resolution
- 2.8 to 12 mm varifocal lens
- Supports H.265+/H.265, H.264+/H.264
- IP67, DWDR
- IR Range: Up to 30 m
- Supports PoE & TF card slot
- Motorized varifocal lens
- Camera Body: Metal, Bottom Base: Plastic



IPC-T220H-U
2 MP Fixed-lens
Turret

- Up to 2 MP high resolution
- 2.8 or 4 mm fixed lens
- Supports H.265+/H.265, H.264+/H.264
- IR Range: Up to 30 m
- IP66, DWDR
- Supports PoE
- Camera body: Metal, Bottom base: Plastic
- Audio: Built-in microphone



IPC-B621H-V/Z
2 MP Varifocal
Bullet

- Up to 2 MP high resolution
- 2.8 to 8 mm varifocal lens
- Supports H.265+/H.265, H.264+/H.264
- IP66, DWDR
- IR Range: Up to 20 m
- Supports PoE & TF card slot
- -V: manual varifocal lens
- -Z: motorized varifocal lens
- Audio: Built-in microphone



IPC-C120-D/W
2 MP Fixed-lens
Wi-Fi Cube

HOT

- Up to 2 MP high resolution
- 2.0 mm fixed lens
- Supports H.265+/H.265, H.264+/H.264
- IR Range: Up to 10 m
- DWDR
- Built-in microphone and speaker, supporting two-way audio
- Built-in Wi-Fi
- Camera Body: Plastic, Bottom Base: Plastic



IPC-P120-D/W
2 MP Fixed-lens
Wi-Fi Mini PT

HOT

- Up to 2 MP high resolution
- 2.0 mm fixed lens
- Supports H.265+/H.265, H.264+/H.264
- IR Range: Up to 10 m
- DWDR
- Built-in microphone and speaker, supporting two-way audio
- Built-in Wi-Fi
- Camera Body: Plastic, Bottom Base: Plastic



PTZ-P332ZI-DE3
PanoVu Mini
IR PTZ

- 3 × 2 MP panoramic images, PTZ: 4x optical zoom
Color: 0.05 lux @ F2.0
B/W: 0.01 lux @ F2.0"
- Supports H.265
- DWDR
- IR: Up to 10 m
- 12 VDC & PoE+



PTZ-N4225I-DE
4-inch 2 MP
IR PTZ

- Up to 2 MP high definition, 25x optical zoom
Color: 0.005 lux @ F1.6,
B/W: 0.001 lux @ F1.6"
- Supports H.265+/H.265
- IP66, 120 dB WDR
- IR: 100 m
- 12 VDC & PoE+



PTZ-N4215I-DE
4-inch 2 MP
IR PTZ

- Up to 2 MP high definition, 15x optical zoom
Color: 0.005 lux @ F1.6,
B/W: 0.001 lux @ F1.6"
- Supports H.265+/H.265
- IP66, 120 dB WDR
- IR: 100 m
- 12 VDC & PoE+



PTZ-N4215-DE3
4-inch 2 MP
Non-IR PTZ

- Up to 2 MP high definition, 15x optical zoom
Color: 0.005 lux @ F1.6,
B/W: 0.001 lux @ F1.6"
- Supports H.265+/H.265
- 120 dB WDR
- 12 VDC & PoE+



PTZ-N2404I-DE3
2-inch 4 MP
IR PTZ

- Up to 4 MP high definition, 4x optical zoom
Color: 0.005 lux @ F1.6
B/W: 0.001 lux @ F1.6"
- Supports H.265+/H.265
- IP66, IK10, 120 dB WDR
- IR: Up to 20 m
- 12 VDC & PoE



PTZ-N2204I-DE3
2-inch 2 MP
IR PTZ

- Up to 4 MP high definition, 4x optical zoom
Color: 0.005 lux @ F1.6,
B/W: 0.001 lux @ F1.6"
- Supports H.265+/H.265
- IP66, IK10, 120 dB WDR
- IR: Up to 20 m
- 12 VDC & PoE



NVR-216MH-C/16P
16-ch 2-HDD
PoE NVR

- 160 Mbps input max.; up to 16 ch. of IP camera input
- 1-ch 8 MP / 4-ch 1080p decoding capacity
- Supports H.265/H.265+, H.264/H.264+
- 2 SATA interfaces, up to 6 TB
- Supports 16 PoE interfaces
- 380 1U case (Metal)



NVR-216MH-C
16-ch 2-HDD
Non-PoE NVR

- 160 Mbps input max.; up to 16 ch. of IP camera input
- 1-ch 8 MP / 4-ch 1080p decoding capacity
- Supports H.265/H.265+, H.264/H.264+
- 2 SATA interfaces, up to 6 TB
- 380 1U case (Metal)



NVR-208MH-C/8P
8-ch 2-HDD
PoE NVR

- 80 Mbps input max.; up to 8 ch. of IP camera input
- 1-ch 8 MP / 4-ch 1080p decoding capacity
- Supports H.265/H.265+, H.264/H.264+
- 2 SATA interfaces, up to 6 TB
- Supports 8 PoE interfaces
- 380 1U case (Metal)



NVR-208MH-C
8-ch 2-HDD
Non-PoE NVR

- 80 Mbps input max.; up to 8 ch. of IP camera input
- 1-ch 8 MP / 4-ch 1080p decoding capacity
- Supports H.265/H.265+, H.264/H.264+
- 2 SATA interfaces, up to 6TB
- 380 1U case (Metal)



NVR-116MH-C
16-ch 1-HDD
Non-PoE NVR

- 160 Mbps input max.; up to 16 ch. of IP camera input
- 1-ch 8 MP / 4-ch 1080p decoding capacity
- Supports H.265/H.265+, H.264/H.264+
- 1 SATA interface, up to 6 TB
- 315 1U case (Metal)



HOT



NVR-108MH-C/8P(B)
8-ch 1-HDD
PoE NVR

- 80 Mbps input max.; up to 8 ch. of IP camera input
- 1-ch 8 MP / 4-ch 1080p decoding capacity
- Supports H.265/H.265+, H.264/H.264+
- 1 SATA interface, up to 6 TB
- Supports 8 PoE interfaces
- 260 1U case (Metal)

HOT



NVR-108MH-C(B)
8-ch 1-HDD
Non-PoE NVR

- 80 Mbps input max.; up to 8 ch. of IP camera input
- 1-ch 8 MP / 4-ch 1080p decoding capacity
- Supports H.265/H.265+, H.264/H.264+
- 1 SATA interface, up to 6 TB
- 260 1U case (Metal)

HOT



NVR-104MH-D/4P
4-ch 1-HDD
PoE NVR

- 40Mbps input max.; up to 4 ch. IP camera input
- 1-ch @ 6 MP / 4-ch @ 1080p decoding capacity
- Supports H.265/H.265+, H.264/H.264+
- 1 SATA interface, up to 6 TB
- Supports 4 PoE interfaces
- 260 1U case (Metal)



NVR-104MH-D
4-ch 1-HDD
Non-PoE NVR

- 40 Mbps input max.; up to 4 ch. of IP camera input
- 1-ch @ 6 MP / 4-ch @ 1080p decoding capacity
- Supports H.265/H.265+, H.264/H.264+
- 1 SATA interface, up to 6 TB
- 260 1U case (Metal)

HOT



NVR-104MH-C/4P(B)
4-ch 1-HDD
PoE NVR

- 40 Mbps input max.; up to 4 ch. of IP camera input
- 1-ch 8 MP / 4-ch 1080p decoding capacity
- Supports H.265/H.265+, H.264/H.264+
- 1 SATA interface, up to 6 TB
- Supports 4 PoE interfaces
- 260 1U case (Metal)

HOT



NVR-104MH-C(B)
4-ch 1-HDD
Non-PoE NVR

- 40 Mbps input max.; up to 4 ch. of IP camera input
- 1-ch 8 MP / 4-ch 1080p decoding capacity
- Supports H.265/H.265+, H.264/H.264+
- 1 SATA interface, up to 6 TB
- 260 1U case (Metal)



NVR-108H-D/8P
8-ch 1-HDD
PoE NVR

- 60 Mbps input max.; up to 8 ch. of IP camera input
- 1-ch @ 6 MP / 4-ch @ 1080p decoding capacity
- Supports H.265/H.265+, H.264/H.264+
- 1 SATA interface, up to 6 TB
- Supports 8 PoE interfaces
- Mini 1U Case (Plastic)



NVR-108H-D
8-ch 1-HDD
Non-PoE NVR

- 60 Mbps input max.; up to 8 ch. of IP camera input
- 1-ch @ 6 MP / 4-ch @ 1080p decoding capacity
- Supports H.265/H.265+, H.264/H.264+
- 1 SATA interface, up to 6 TB
- Mini 1U Case (Plastic)



NVR-108MH-D/8P
8-ch 1-HDD
PoE NVR

- 60 Mbps input max.; up to 8 ch. of IP camera input
- 1-ch @ 6 MP / 4-ch @ 1080p decoding capacity
- Supports H.265/H.265+, H.264/H.264+
- 1 SATA interface, up to 6 TB
- Supports 8 PoE interfaces
- 260 1U case (Metal)



NVR-108MH-D
8-ch 1-HDD
Non-PoE NVR

- 60 Mbps input max.; up to 8 ch. of IP camera input
- 1-ch @ 6 MP / 4-ch @ 1080p decoding capacity
- Supports H.265/H.265+, H.264/H.264+
- 1 SATA interface, up to 6 TB
- 260 1U case (Metal)



NVR-104H-D/4P
4-ch 1-HDD
PoE NVR

- 40 Mbps input max.; up to 4 ch. of IP camera input
- 1-ch @ 6 MP / 4-ch @ 1080p decoding capacity
- Supports H.265/H.265+, H.264/H.264+
- 1 SATA interface, up to 6 TB
- Supports 4 PoE interfaces
- Mini 1U Case (Plastic)



NVR-104H-D
4-ch 1-HDD
Non-PoE NVR

- 40 Mbps input max.; up to 4 ch. of IP camera input
- 1-ch @ 6 MP / 4-ch @ 1080p decoding capacity
- Supports H.265/H.265+, H.264/H.264+
- 1 SATA interface, up to 6 TB
- Mini 1U Case (Plastic)



NVR-104MH-D/W
4-ch 1-HDD Wi-Fi
Video Recorder

- 50 Mbps input max.; up to 4 ch. of IP camera input
- 1-ch @ 4 MP / 4-ch @ 1080p decoding capacity
- Supports H.265/H.265+, H.264/H.264+
- 1 SATA interface, up to 6 TB
- 260 1U case (Metal)
- Wi-Fi Antenna Structure: 2*MIMO
- Wi-Fi Transmission Distance: 80 m



NVR-108MH-D/W
8-ch 1-HDD Wi-Fi
Video Recorder

- 50 Mbps input max.; up to 8 ch. of IP camera input
- 1-ch @ 4 MP / 4-ch @ 1080p decoding capacity
- Supports H.265/H.265+, H.264/H.264+
- 1 SATA interface, up to 6 TB
- 260 1U case (Metal)
- Wi-Fi Antenna Structure: 2*MIMO
- Wi-Fi Transmission Distance: 80 m



IK-4042BH-MH/P 2 MP Bullet PoE Kit

- NVR: 4-ch Network Video Recorder
- IPC: 4 * 2 MP Fixed-lens Bullet
- Cable: Four 18-meter Cat 5e network cables, one 2-meter Cat 5e network cable, one 2-meter HDMI cable
- Supports 4 PoE interfaces
- Supports H.265/H.264



IK-4142BH-MH/P 2 MP Bullet PoE Kit

- NVR: 4-ch 1-HDD Network Video Recorder
- IPC: 4* 2 MP Fixed-lens Bullet
- Cable: Four 18-meter Cat 5e network cable, one 2-meter Cat 5e network cable, one 2-meter HDMI cable
- HDD: 1 TB
- Supports 4 PoE interfaces
- Supports H.265/H.264



IK-4042TH-MH/P 2 MP Turret PoE Kit

- NVR: 4-ch Network Video Recorder
- IPC: 4 * 2 MP Fixed-lens Turret
- Cable: Four 18-meter Cat 5e network cables, one 2-meter Cat 5e network cable, one 2-meter HDMI cable
- Supports 4 PoE interfaces
- Supports H.265/H.264



IK-4142TH-MH/P 2 MP Turret PoE Kit

- NVR: 4-ch 1-HDD Network Video Recorder
- IPC: 4 * 2 MP Fixed-lens Turret
- Cable: Four 18-meter Cat 5e network cables, one 2-meter Cat 5e network cable, one 2-meter HDMI cable
- HDD: 1 TB
- Supports 4 PoE interfaces
- Supports H.265/H.264



IK-4142B-MH/W(B) 2 MP Bullet Wi-Fi Kit

- NVR: 4-ch 1-HDD Wi-Fi Video Recorder
- IPC: 4 * 2 MP IR Fixed Bullet Wi-Fi Camera
- Cable: One 1-meter Cat 5e network cable, one 2-meter HDMI cable
- HDD: 1 TB
- Supports H.265/H.264
- Wi-Fi Antenna Structure: 2*MIMO
- Wi-Fi Transmission Distance: 80 m

TURBO HD SOLUTION

HiLook's Turbo HD cameras feature plug-and-play capabilities using coaxial cables and render superior imaging in as little light as 0.005 lux. The PIR detection with strobe light and siren, and compatibility with other brands take this solution far beyond its competitors. HiLook Turbo HD DVRs also feature an easy-to-use UI, giving security personnel powerful camera management and recording with excellent compression technology.



THC-B240-M
4 MP Fixed-lens
Bullet

- 4 MP CMOS Sensor
- 2.8, 3.6 or 6 mm lens
- 40 m IR, ICR, 0.01 lux @ F1.2
- 12 VDC, Smart IR, DWDR, DNR, OSD Menu
- IP66
- Supports HD-TVI / AHD / CVI / CVBS video output
- Material: Metal



THC-B240
4 MP Fixed-lens
Bullet

- 4 MP CMOS Sensor
- 2.8, 3.6 or 6 mm lens
- 40 m IR, ICR, 0.01 lux @ F1.2
- 12 VDC, Smart IR, DWDR, DNR, OSD Menu
- IP66
- Supports HD-TVI / AHD / CVI / CVBS video output
- Material: Metal & Plastic



THC-B140-M
4 MP Fixed-lens
Mini Bullet

- 4 MP CMOS Sensor
- 2.8, 3.6 or 6 mm lens
- 20 m IR, ICR, 0.01 lux @ F1.2
- 12 VDC, Smart IR, DWDR, DNR, OSD Menu
- IP66
- Supports HD-TVI / AHD / CVI / CVBS video output
- Material: Metal



THC-B140-P
4 MP Fixed-lens
Mini Bullet

- 4 MP CMOS Sensor
- 2.8, 3.6 or 6 mm lens
- 20 m IR, ICR, 0.01 lux @ F1.2
- 12 VDC, Smart IR, DWDR, DNR, OSD Menu
- IP66
- Supports HD-TVI / AHD / CVI / CVBS video output
- Material: Plastic



THC-D340-VF
4 MP Varifocal
Dome

- 4 MP CMOS Sensor
- 2.8 to 12 mm varifocal lens
- 40 m IR, ICR, 0.01 lux @ F1.2
- 12 VDC, Smart IR, DWDR, DNR, OSD Menu
- IP66, IK10
- Supports HD-TVI / AHD / CVI / CVBS video output
- Material: Metal



THC-T140-M
4 MP Fixed-lens
Mini Turret

- 4 MP CMOS Sensor
- 2.8, 3.6 or 6 mm lens
- 20 m IR, ICR, 0.01 lux @ F1.2
- 12 VDC, Smart IR, DWDR, DNR, OSD Menu
- IP66
- Supports HD-TVI / AHD / CVI / CVBS video output
- Material: Metal



THC-T140
4 MP Fixed-lens
Mini Turret

- 4 MP CMOS Sensor
- 2.8, 3.6 or 6 mm lens
- 20 m IR, ICR, 0.01 lux @ F1.2
- 12 VDC, Smart IR, DWDR, DNR, OSD Menu
- IP66
- Supports HD-TVI / AHD / CVI / CVBS video output
- Material: Metal & Plastic



THC-T140-P
4 MP Fixed-lens
Mini Turret

- 4 MP CMOS Sensor
- 2.8, 3.6 or 6 mm lens
- 20 m IR, ICR, 0.01 lux @ F1.2
- 12 VDC, Smart IR, DWDR, DNR, OSD Menu
- Supports HD-TVI / AHD / CVI / CVBS video output
- Material: Plastic



THC-B229-M
2 MP Fixed-lens
ColorVu Bullet

- 2 MP CMOS Sensor
- 2.8 , 3.6 or 6 mm fixed focal lens
- 40 m white light distance, 0.001 Lux @ F1.0
- 12 VDC, Smart Light, DWDR, OSD Menu, 3D DNR
- IP66
- Supports HD-TVI / AHD / CVI / CVBS video output
- Material: Metal



THC-B129-M
2 MP Fixed-lens
ColorVu Mini Bullet

- 2 MP CMOS Sensor
- 2.8 , 3.6 or 6 mm fixed focal lens
- 20 m white light distance, 0.001 Lux @ F1.0
- 12 VDC, Smart Light, DWDR, OSD Menu, 3D DNR
- IP66
- Supports HD-TVI / AHD / CVI / CVBS video output
- Material: Metal



THC-T240-M
4 MP Fixed-lens
Turret

- 4 MP CMOS Sensor
- 2.8, 3.6 or 6 mm lens
- 40 m IR, ICR, 0.01 lux @ F1.2
- 12 VDC, Smart IR, DWDR, DNR, OSD Menu
- IP66
- Supports HD-TVI / AHD / CVI / CVBS video output
- Material: Metal



THC-T240-P
4 MP Fixed-lens
Turret

- 4 MP CMOS Sensor
- 2.8, 3.6 or 6 mm lens
- 40 m IR, ICR, 0.01 lux @ F1.2
- 12 VDC, Smart IR, DWDR, DNR, OSD Menu
- IP66
- Supports HD-TVI / AHD / CVI / CVBS video output
- Material: Plastic



THC-B129-P
2 MP Fixed-lens
ColorVu Mini Bullet

- 2 MP CMOS Sensor
- 2.8 , 3.6 or 6 mm fixed focal lens
- 20 m white light distance, 0.001 Lux @ F1.0
- 12 VDC, Smart Light, DWDR, OSD Menu, 3D DNR
- IP66
- Supports HD-TVI / AHD / CVI / CVBS video output
- Material: Plastic



THC-T229-M
2 MP Fixed-lens
ColorVu Turret

- 2 MP CMOS Sensor
- 2.8 , 3.6 or 6 mm fixed focal lens
- 40 m white light distance, 0.001 Lux @ F1.0
- 12 VDC, Smart Light, DWDR, OSD Menu, 3D DNR
- IP66
- Supports HD-TVI / AHD / CVI / CVBS video output
- Material: Metal



THC-B340-VF
4 MP Varifocal
Bullet

- 4 MP CMOS Sensor
- 2.8 to 12 mm varifocal lens
- 40 m IR, ICR, 0.01 lux @ F1.2
- 12 VDC, Smart IR, DWDR, DNR, OSD Menu
- IP66
- Supports HD-TVI / AHD / CVI / CVBS video output
- Material: Metal & Plastic



THC-T340-VF
4 MP Varifocal
Turret

- 4 MP CMOS Sensor
- 2.8 to 12 mm varifocal lens
- 40 m IR, ICR, 0.01 lux @ F1.2
- 12 VDC, Smart IR, DWDR, DNR, OSD Menu,
- IP66
- Supports HD-TVI / AHD / CVI / CVBS video output
- Material: Metal & Plastic



THC-T129-M
2 MP Fixed-lens
ColorVu Mini Turret

- 2 MP CMOS Sensor
- 2.8 , 3.6 or 6 mm fixed focal lens
- 20 m white light distance, 0.001 Lux @ F1.0
- 12 VDC, Smart Light, DWDR, OSD Menu, 3D DNR
- IP66
- Supports HD-TVI / AHD / CVI / CVBS video output
- Material: Metal



THC-T129-P
2 MP Fixed-lens
ColorVu Mini Turret

- 2 MP CMOS Sensor
- 2.8 mm, 3.6 mm, 6 mm fixed focal lens
- 20 m white light distance, 0.001 Lux @ F1.0
- 12 VDC, Smart Light, DWDR, OSD Menu, 3D DNR
- Supports HD-TVI / AHD / CVI / CVBS video output
- Material: Plastic



THC-B223-M
2 MP Fixed-lens
Bullet

- 2 MP CMOS Sensor
- 2.8, 3.6 or 6 mm lens
- 50 m IR, ICR, 0.005 lux @ F1.2
- 12 VDC, Smart IR, True WDR, 3D DNR, OSD Menu
- IP66
- Supports HD-TVI / AHD / CVI / CVBS video output
- Material: Metal



THC-B223
2 MP Fixed-lens
Bullet

- 2 MP CMOS Sensor
- 2.8, 3.6 or 6 mm lens
- 50 m IR, ICR, 0.005 lux @ F1.2
- 12 VDC, Smart IR, True WDR, 3D DNR, OSD Menu
- IP66
- Supports HD-TVI / AHD / CVI / CVBS video output
- Material: Metal & Plastic



THC-T123-P
2 MP Fixed-lens
Mini Turret

- 2 MP CMOS Sensor
- 2.8, 3.6 or 6 mm lens
- 30 m IR, ICR, 0.005 lux @ F1.2
- 12 VDC, Smart IR, True WDR, 3D DNR, OSD
- Supports HD-TVI / AHD / CVI / CVBS video output
- Material: Plastic



THC-T223-M
2 MP Fixed-lens
Turret

- 2 MP CMOS Sensor
- 2.8, 3.6 or 6 mm lens
- 50 m IR, ICR, 0.005 lux @ F1.2
- 12 VDC, Smart IR, True WDR, 3D DNR, OSD Menu
- IP66
- Supports HD-TVI / AHD / CVI / CVBS video output
- Material: Metal



THC-B123-M
2 MP Fixed-lens
Mini Bullet

- 2 MP CMOS Sensor
- 2.8, 3.6 or 6 mm lens
- 30 m IR, ICR, 0.005 lux @ F1.2
- 12 VDC, Smart IR, True WDR, 3D DNR, OSD Menu
- IP66
- Supports HD-TVI / AHD / CVI / CVBS video output
- Material: Metal



THC-B123-P
2 MP Fixed-lens
Mini Bullet

- 2 MP CMOS Sensor
- 2.8, 3.6 or 6 mm lens
- 30 m IR, ICR, 0.005 lux @ F1.2
- 12 VDC, Smart IR, True WDR, 3D DNR, OSD Menu
- IP66
- Supports HD-TVI / AHD / CVI / CVBS video output
- Material: Plastic



THC-T223-P
2 MP Fixed-lens
Turret

- 2 MP CMOS Sensor
- 2.8, 3.6 or 6 mm lens
- 50 m IR, ICR, 0.005 lux @ F1.2
- 12 VDC, Smart IR, True WDR, 3D DNR, OSD Menu
- IP66
- Supports HD-TVI / AHD / CVI / CVBS video output
- Material: Plastic



THC-B323-Z
2 MP Varifocal
Bullet

- 2 MP CMOS Sensor
- 2.7 to 13.5 mm varifocal lens
- 70 m IR, ICR, 0.005 lux @ F1.2
- 12 VDC, Smart IR, True WDR, 3D DNR, OSD Menu, Auto Focus
- IP66
- Supports HD-TVI / AHD / CVI / CVBS video output
- Material: Metal



THC-T123-M
2 MP Fixed-lens
Mini Turret

- 2 MP CMOS Sensor
- 2.8, 3.6 or 6 mm lens
- 50 m IR, ICR, 0.005 lux @ F1.2
- 12 VDC, Smart IR, True WDR, 3D DNR, OSD Menu
- IP66
- Supports HD-TVI / AHD / CVI / CVBS video output
- Material: Metal



THC-T123
2 MP Fixed-lens
Mini Turret

- 2 MP CMOS Sensor
- 2.8, 3.6 or 6 mm lens
- 30 m IR, ICR, 0.005 lux @ F1.2
- 12 VDC, Smart IR, True WDR, 3D DNR, OSD Menu
- IP66
- Supports HD-TVI / AHD / CVI / CVBS video output
- Material: Metal & Plastic



THC-D323-Z
2 MP Varifocal
Dome

- 2 MP CMOS Sensor
- 2.7 to 13.5 mm varifocal lens
- 70 m IR, ICR, 0.005 lux @ F1.2
- 12 VDC, Smart IR, True WDR, 3D DNR, OSD Menu, Auto Focus
- IP66, IK10
- Supports HD-TVI / AHD / CVI / CVBS video output
- Material: Metal



THC-T323-Z
2 MP Varifocal
Turret

- 2 MP CMOS Sensor
- 2.7 to 13.5 mm varifocal lens
- 70 m IR, ICR, 0.005 lux @ F1.2,
- 12 VDC, Smart IR, True WDR, 3D DNR, OSD Menu, Auto Focus
- IP66
- Supports HD-TVI / AHD / CVI / CVBS video output
- Material: Metal



HOT



THC-B120-MS
2 MP Built-in Mic
Bullet

- 2 MP CMOS Sensor
- 2.8, 3.6 or 6 mm lens
- 30 m IR, ICR, 0.01 lux @ F1.2
- 12 VDC, Smart IR, DWDR, DNR, OSD Menu
- IP66
- Supports HD-TVI / AHD / CVI / CVBS video output
- Audio: Built-in microphone
- Material: Metal

HOT



THC-B120-PS
2 MP Built-in Mic
Bullet

- 2 MP CMOS Sensor
- 2.8, 3.6 or 6 mm lens
- 25 m IR, ICR, 0.01 lux @ F1.2
- 12 VDC, Smart IR, DWDR, DNR, OSD Menu
- IP66
- Supports HD-TVI / AHD / CVI / CVBS video output
- Audio: Built-in microphone
- Material: Plastic



THC-B220
2 MP Fixed-lens
Bullet

- 2 MP CMOS Sensor
- 2.8, 3.6 or 6 mm lens
- 40 m IR, ICR, 0.01 lux @ F1.2
- 12 VDC, Smart IR, DWDR, DNR, OSD Menu
- IP66
- Supports HD-TVI / AHD / CVI / CVBS video output
- Material: Metal & Plastic



THC-B120-M
2 MP Fixed-lens
Mini Bullet

- 2 MP CMOS Sensor
- 2.8, 3.6 or 6 mm lens
- 20 m IR, ICR, 0.01 lux @ F1.2
- 12 VDC, Smart IR, DWDR, DNR, OSD Menu
- IP66
- Supports HD-TVI / AHD / CVI / CVBS video output
- Material: Metal

HOT



THC-T220-MS
2 MP Built-in Mic
Turret

- 2 MP CMOS Sensor
- 2.8, 3.6 or 6 mm lens
- 40 m IR, ICR, 0.01 lux @ F1.2
- 12 VDC, Smart IR, DWDR, DNR, OSD Menu
- IP66
- Supports HD-TVI / AHD / CVI / CVBS video output
- Audio: Built-in microphone
- Material: Metal

HOT



THC-T120-MS
2 MP Built-in Mic
Turret

- 2 MP CMOS Sensor
- 2.8, 3.6 or 6 mm lens
- 30 m IR, ICR, 0.01 lux @ F1.2
- 12 VDC, Smart IR, DWDR, DNR, OSD Menu
- IP66
- Supports HD-TVI / AHD / CVI / CVBS video output
- Audio: Built-in microphone
- Material: Metal



THC-B120-P(B)
2 MP Fixed-lens
Mini Bullet

- 2 MP CMOS Sensor
- 2.8, 3.6 or 6 mm lens
- 20 m IR, ICR, 0.01 lux @ F1.2
- 12 VDC, Smart IR, DWDR, DNR, OSD Menu
- IP66
- Supports HD-TVI / AHD / CVI / CVBS video output
- Material: Plastic



THC-T120-M
2 MP Fixed-lens
Mini Turret

- 2 MP CMOS Sensor
- 2.8, 3.6 or 6 mm lens
- 20 m IR, ICR, 0.01 lux @ F1.2
- 12 VDC, Smart IR, DWDR, DNR, OSD Menu
- IP66
- Supports HD-TVI / AHD / CVI / CVBS video output
- Material: Metal

HOT



THC-T120-PS
2 MP Built-in Mic
Turret

- 2 MP CMOS Sensor
- 2.8, 3.6 or 6 mm lens
- 20 m IR, ICR, 0.01 lux @ F1.2
- 12 VDC, Smart IR, DWDR, DNR, OSD Menu
- Supports HD-TVI / AHD / CVI / CVBS video output
- Audio: Built-in microphone
- Material: Plastic



THC-B220-M
2 MP Fixed-lens
Bullet

- 2 MP CMOS Sensor
- 2.8, 3.6 or 6 mm lens
- 40 m IR, ICR, 0.01 lux @ F1.2
- 12 VDC, Smart IR, DWDR, DNR, OSD Menu
- IP66
- Supports HD-TVI / AHD / CVI / CVBS video output
- Material: Metal



THC-T120
2 MP Fixed-lens
Mini Turret

- 2 MP CMOS Sensor
- 2.8, 3.6 or 6 mm lens
- 20 m IR, ICR, 0.01 lux @ F1.2
- 12 VDC, Smart IR, DWDR, DNR, OSD Menu
- IP66
- Supports HD-TVI / AHD / CVI / CVBS video output
- Material: Metal & Plastic



THC-T120-P
2 MP Fixed-lens
Mini Turret

- 2 MP CMOS Sensor
- 2.8, 3.6 or 6 mm lens
- 20 m IR, ICR, 0.01 lux @ F1.2
- 12 VDC, Smart IR, DWDR, DNR, OSD Menu
- Supports HD-TVI / AHD / CVI / CVBS video output
- Material: Plastic



THC-T220-M
2 MP Fixed-lens
Turret

- 2 MP CMOS Sensor
- 2.8, 3.6 or 6 mm lens
- 40 m IR, ICR, 0.01 lux @ F1.2
- 12 VDC, Smart IR, DWDR, DNR, OSD Menu
- IP66
- Supports HD-TVI / AHD / CVI / CVBS video output
- Material: Metal



THC-T220-P
2 MP Fixed-lens
Turret

- 2 MP CMOS Sensor
- 2.8, 3.6 or 6 mm lens
- 40 m IR, ICR, 0.01 lux @ F1.2
- 12 VDC, Smart IR, DWDR, DNR, OSD Menu
- IP66
- Supports HD-TVI / AHD / CVI / CVBS video output
- Material: Plastic



THC-B210-M
1 MP Fixed-lens
Bullet

- 1 MP CMOS Sensor
- 2.8, 3.6 or 6 mm lens
- 40 m IR, ICR, 0.01 lux @ F1.2
- 12 VDC, Smart IR, DWDR, OSD Menu
- IP66
- Supports HD-TVI / AHD / CVI / CVBS video output
- Material: Metal



THC-B210
1 MP Fixed-lens
Bullet

- 1 MP CMOS Sensor
- 2.8, 3.6 or 6 mm lens
- 40 m IR, ICR, 0.01 lux @ F1.2
- 12 VDC, Smart IR, DWDR, DNR, OSD Menu
- IP66
- Supports HD-TVI / AHD / CVI / CVBS video output
- Material: Metal & Plastic



THC-B320-VF
2 MP Varifocal
Bullet

- 2 MP CMOS Sensor
- 2.8 to 12 mm varifocal lens
- 40 m IR, ICR, 0.01 lux @ F1.2
- 12 VDC, Smart IR, DWDR, DNR, OSD Menu
- IP66
- Supports HD-TVI / AHD / CVI / CVBS video output
- Material: Metal & Plastic



THC-D320-VF
2 MP Varifocal
Dome

- 2 MP CMOS Sensor
- 2.8 to 12 mm varifocal lens
- 40 m IR, ICR, 0.01 lux @ F1.2
- 12 VDC, Smart IR, DWDR, DNR, OSD Menu
- IP66, IK10
- Supports HD-TVI / AHD / CVI / CVBS video output
- Material: Metal



THC-B110-M
1 MP Fixed-lens
Mini Bullet

- 1 MP CMOS Sensor
- 2.8, 3.6 or 6 mm lens
- 20 m IR, ICR, 0.01 lux @ F1.2
- 12 VDC, Smart IR, DWDR, DNR, OSD Menu
- IP66
- Supports HD-TVI / AHD / CVI / CVBS video output
- Material: Metal



THC-B110-P(B)
1 MP Fixed-lens
Mini Bullet

- 1 MP CMOS Sensor
- 2.8, 3.6 or 6 mm lens
- 20 m IR, ICR, 0.01 lux @ F1.2
- 12 VDC, Smart IR, DWDR, DNR, OSD Menu
- IP66
- Supports HD-TVI / AHD / CVI / CVBS video output
- Material: Plastic



THC-T320-VF
2 MP Varifocal
Turret

- 2 MP CMOS Sensor
- 2.8 to 12 mm varifocal lens
- 40 m IR, ICR, 0.01 lux @ F1.2,
- 12 VDC, Smart IR, DWDR, DNR, OSD Menu,
- IP66
- Supports HD-TVI / AHD / CVI / CVBS video output
- Material: Metal & Plastic



THC-B120-MPIRL
2 MP PIR Bullet

- 2.8 or 3.6 mm lens
- PIR detection, Strobe Light Alarm
- 20 m IR, ICR, 0.01 lux @ F1.2
- 12 VDC, Smart IR, DWDR, OSD Menu
- IP66
- Material: Metal



THC-T110-M
1 MP Fixed-lens
Mini Turret

- 1 MP CMOS Sensor
- 2.8, 3.6 or 6 mm lens
- 20 m IR, ICR, 0.01 lux @ F1.2
- 12 VDC, Smart IR, DWDR, DNR, OSD Menu
- IP66
- Supports HD-TVI / AHD / CVI / CVBS video output
- Material: Metal



THC-T110
1 MP Fixed-lens
Mini Turret

- 1 MP CMOS Sensor
- 2.8, 3.6 or 6 mm lens
- 20 m IR, ICR, 0.01 lux @ F1.2
- 12 VDC, Smart IR, DWDR, DNR, OSD Menu
- IP66
- Supports HD-TVI / AHD / CVI / CVBS video output
- Material: Metal & Plastic



THC-T110-P
1 MP Fixed-lens
Mini Turret

- 1 MP CMOS Sensor
- 2.8, 3.6 or 6 mm lens
- 20 m IR, ICR, 0.01 lux @ F1.2
- 12 VDC, Smart IR, DWDR, DNR, OSD Menu
- Supports HD-TVI / AHD / CVI / CVBS video output
- Material: Plastic



THC-T210-M
1 MP Fixed-lens
Turret

- 1 MP CMOS Sensor
- 2.8, 3.6 or 6 mm lens
- 40 m IR, ICR, 0.01 lux @ F1.2
- 12 VDC, Smart IR, DWDR, DNR, OSD Menu
- IP66
- Supports HD-TVI / AHD / CVI / CVBS video output
- Material: Metal



PTZ-T4225I-D
4-inch 2 MP
IR PTZ

- Up to 2 MP high definition, 25x optical zoom
- Color: 0.005 lux @ F1.6, B/W: 0.001 lux @ F1.6
- IP66, 120 dB WDR
- IR: 100 m, 12 VDC
- 8 privacy masks



PTZ-T4215I-D
4-inch 2 MP
IR PTZ

- Up to 2 MP high definition, 15x optical zoom
- Color: 0.005 lux @ F1.6, B/W: 0.001 lux @ F1.6
- IP66, 120 dB WDR
- IR: 100 m, 12 VDC
- 8 privacy masks



THC-T210-P
1 MP Fixed-lens
Turret

- 1 MP CMOS Sensor
- 2.8, 3.6 or 6 mm lens
- 40 m IR, ICR, 0.01 lux @ F1.2
- 12 VDC, Smart IR, DWDR, DNR, OSD Menu
- IP66
- Supports HD-TVI / AHD / CVI / CVBS video output
- Material: Plastic



THC-B310-VF
1 MP Varifocal
Bullet

- 1 MP CMOS Sensor
- 2.8 to 12 mm varifocal lens
- 40 m IR, ICR, 0.01 lux @ F1.2
- 12 VDC, Smart IR, DWDR, DNR, OSD Menu
- IP66
- Supports HD-TVI / AHD / CVI / CVBS video output
- Material: Metal & Plastic



PTZ-T4215-D3
4-inch 2 MP
Non-IR PTZ

- Up to 2 MP high definition, 15x optical zoom
- Color: 0.005 lux @ F1.6, B/W: 0.001 lux @ F1.6
- 120 dB WDR
- 12 VDC
- 8 privacy masks



THC-D310-VF
1 MP Varifocal
Dome

- 1 MP CMOS Sensor
- 2.8 to 12 mm varifocal lens
- 40 m IR, ICR, 0.01 lux @ F1.2
- 12 VDC, Smart IR, DWDR, DNR, OSD Menu
- IP66, IK10
- Supports HD-TVI / AHD / CVI / CVBS video output
- Material: Metal



THC-T310-VF
1 MP Varifocal
Turret

- 1 MP CMOS Sensor
- 2.8 to 12 mm varifocal lens
- 40 m IR, ICR, 0.01 lux @ F1.2
- 12 VDC, Smart IR, DWDR, DNR, OSD Menu
- IP66
- Supports HD-TVI / AHD / CVI / CVBS video output
- Material: Metal & Plastic



5 MP HOT



DVR-204U-K1
4-ch 1-HDD DVR

- 4-ch HD-TVI / AHD / CVI / CVBS video
- 1-ch, RCA (2.0 Vp-p, 1 KΩ)
4-ch audio via coaxial cable
- Up to 8 channels of IP video input (up to 8 MP resolution)
- H.265 Pro+ / H.265 Pro / H.265 / H.264+ / H.264
- 5 MP @ 12 fps/ch
- 260 1U case

5 MP HOT



DVR-208U-K1
8-ch 1-HDD DVR

- 8-ch HD-TVI / AHD / CVI / CVBS video
- 1-ch, RCA (2.0 Vp-p, 1 KΩ)
8-ch audio via coaxial cable
- Up to 16 channels of IP video input (up to 8 MP resolution)
- H.265 Pro+ / H.265 Pro / H.265 / H.264+ / H.264
- 8 MP @ 8 fps/ch
- 260 1U case

1080p



DVR-216Q-K1
16-ch 1-HDD DVR

- 16-ch HD-TVI / AHD / CVI / CVBS video
- 1-ch, RCA (2.0 Vp-p, 1 KΩ)
16-ch audio via coaxial cable
- Up to 24 channels of IP video input (up to 6 MP resolution)
- H.265 Pro+ / H.265 Pro / H.265 / H.264+ / H.264
- 4 MP Lite @ 15 fps/ch
- 260 1U case

1080p



DVR-216Q-K2
16-ch 2-HDD DVR

- 16-ch HD-TVI / AHD / CVI / CVBS video
- 1-ch, RCA (2.0 Vp-p, 1 KΩ)
16-ch audio via coaxial cable
- Up to 24 channels of IP video input (up to 6 MP resolution)
- H.265 Pro+ / H.265 Pro / H.265 / H.264+ / H.264
- 4 MP Lite @ 15 fps/ch
- 380 1U case

5 MP



DVR-216U-K2
16-ch 2-HDD DVR

- 16-ch HD-TVI / AHD / CVI / CVBS video
- 1-ch, RCA (2.0 Vp-p, 1 KΩ)
16-ch audio via coaxial cable
- Up to 32 channels of IP video input (up to 8 MP resolution)
- H.265 Pro+ / H.265 Pro / H.265 / H.264+ / H.264
- 8 MP @ 8 fps/ch
- 380 1U case

1080p



DVR-204Q-K1
4-ch 1-HDD DVR

- 4-ch HD-TVI / AHD / CVI / CVBS video
- 1-ch, RCA (2.0 Vp-p, 1 KΩ)
4-ch audio via coaxial cable
- Up to 6 channels of IP video input (up to 6 MP resolution)
- H.265 Pro+ / H.265 Pro / H.265 / H.264+ / H.264
- 4 MP Lite @ 15 fps/ch
- 260 1U case

1080p



DVR-224Q-K2
24-ch 2-HDD DVR

- 24-ch HD-TVI / AHD / CVI / CVBS video
- 1-ch, RCA (2.0 Vp-p, 1 KΩ)
24-ch audio via coaxial cable
- Up to 26 channels of IP video input (up to 4 MP resolution)
- H.265 Pro+ / H.265 Pro / H.265 / H.264+ / H.264
- 4 MP Lite @ 15 fps/ch
- 380 1U case

1080p



DVR-232Q-K2
32-ch 2HDD DVR

- 32-ch HD-TVI / AHD / CVI / CVBS video
- 1-ch, RCA (2.0 Vp-p, 1 KΩ)
32-ch audio via coaxial cable
- Up to 34 channels of IP video input (up to 4 MP resolution)
- H.265 Pro+ / H.265 Pro / H.265 / H.264+ / H.264
- 4 MP Lite @ 15 fps/ch
- 380 1U case

1080p



DVR-208Q-K1
8-ch 1-HDD DVR

- 8-ch HD-TVI / AHD / CVI / CVBS video
- 1-ch, RCA (2.0 Vp-p, 1 KΩ)
8-ch audio via coaxial cable
- Up to 12 channels of IP video input (up to 6 MP resolution)
- H.265 Pro+ / H.265 Pro / H.265 / H.264+ / H.264
- 4 MP Lite @ 15 fps/ch
- 260 1U case

1080p



DVR-208Q-K2
8-ch 2-HDD DVR

- 8-ch HD-TVI / AHD / CVI / CVBS video
- 1-ch, RCA (2.0 Vp-p, 1 KΩ)
8-ch audio via coaxial cable
- Up to 12 channels of IP video input (up to 6 MP resolution)
- H.265 Pro+ / H.265 Pro / H.265 / H.264+ / H.264
- 4 MP Lite @ 15 fps/ch
- 380 1U case

1080p Lite



DVR-204G-F1
4-ch 1-HDD DVR

- 4-ch HD-TVI / AHD / CVI / CVBS video & 1-ch audio input
- 1-ch, RCA (2.0 Vp-p, 1 KΩ)
4-ch audio via coaxial cable
- Up to 5 channels of IP video input (up to 1080p resolution)
- 1 SATA interface, HD 1080p Lite @ 25 fps/ch
- 260 1U case

1080p Lite



DVR-208G-F1
8-ch 1-HDD DVR

- 8-ch HD-TVI / AHD / CVI / CVBS video & 1-ch audio input
- 1-ch, RCA (2.0 Vp-p, 1 KΩ)
8-ch audio via coaxial cable
- Up to 10 channels of IP video input (up to 1080p resolution)
- 1 SATA interface, HD 1080p Lite @ 12 fps/ch
- 260 1U case



1080p Lite



DVR-216G-F1
16-ch 1-HDD DVR

- 16-ch HD-TVI / AHD / CVI / CVBS video & 1-ch audio input
- 1-ch, RCA (2.0 Vp-p, 1 KΩ)
- Up to 18 channels of IP video input (up to 1080p resolution)
- 1 SATA interface, HD 1080p Lite @ 12 fps/ch
- 260 1U case

1080p Lite



DVR-216G-K1
16-ch 1 HDD DVR

- 16-ch HD-TVI / AHD / CVI / CVBS video & 1-ch audio input
- 1-ch, RCA (2.0 Vp-p, 1 KΩ)
- 16-ch audio via coaxial cable
- Up to 18 channels of IP video input (up to 5 MP resolution)
- 1 SATA interface, HD 1080p Lite @ 15 fps/ch
- 260 1U case

1080p Lite



DVR-108G-F1
8-ch 1-HDD DVR

- 8-ch HD-TVI / AHD / CVI / CVBS video & 1-ch audio input
- 1-ch, RCA (2.0 Vp-p, 1 KΩ)
- 8-ch audio via coaxial cable
- Up to 10 channels of IP video input (up to 5 MP resolution)
- 1 SATA interface, HD 1080p Lite @ 25 fps/ch.
- Mini case

1080p Lite



DVR-116G-F1
16-ch 1-HDD DVR

- 16-ch HD-TVI / AHD / CVI / CVBS video & 1-ch audio input
- 1-ch, RCA (2.0 Vp-p, 1 KΩ)
- Up to 18 channels of IP video input (up to 5 MP resolution)
- 1 SATA interface, HD 1080p Lite @ 25 fps/ch.
- Mini case

1080p Lite



DVR-216G-K2
16-ch 2-HDD DVR

- 16-ch HD-TVI / AHD / CVI / CVBS video & 1-ch audio input
- 1-ch, RCA (2.0 Vp-p, 1 KΩ)
- 16-ch audio via coaxial cable
- Up to 18 channels of IP video input (up to 5 MP resolution)
- 2 SATA interface, HD 1080p Lite @ 15 fps/ch
- 380 1U case

1080p Lite



DVR-224G-K2
24-ch 2-HDD DVR

- 24-ch HD-TVI / AHD / CVI / CVBS video & 1-ch audio input
- 1-ch, RCA (2.0 Vp-p, 1 KΩ)
- Up to 18 channels of IP video input (up to 5 MP resolution)
- 2 SATA interface, HD 1080p Lite @ 15 fps/ch
- 380 1U case

1080p Lite



DVR-116G-K1
16-ch 1-HDD DVR

- 16-ch HD-TVI / AHD / CVI / CVBS video & 1-ch audio input
- 1-ch, RCA (2.0 Vp-p, 1 KΩ)
- 16-ch audio via coaxial cable"
- Up to 18 channels of IP video input (up to 5 MP resolution)
- 1 SATA interface, HD 1080p Lite @ 15 fps/ch.
- Mini case

1080p Lite



DVR-232G-K2
32-ch 2-HDD DVR

- 32-ch HD-TVI / AHD / CVI / CVBS video & 1-ch audio input
- 1-ch, RCA (2.0 Vp-p, 1 KΩ)
- Up to 18 channels of IP video input (up to 5 MP resolution)
- 2 SATA interface, HD 1080p Lite @ 15 fps/ch
- 380 1U case

1080p Lite



DVR-104G-F1
4-ch 1-HDD DVR

- 4-ch HD-TVI / AHD / CVI / CVBS video & 1-ch audio input
- 1-ch, RCA (2.0 Vp-p, 1 KΩ)
- 4-ch audio via coaxial cable
- Up to 5 channels of IP video input (up to 1080p resolution)
- 1 SATA interface, HD 1080p Lite @ 25 fps/ch
- Mini case

TRANSMISSION



With an incredible cost-to-performance ratio, HiLook cables and switches feature the most reliable performance for the price. The high-quality materials used in the network cables and coaxial cables make them extremely flame-resistant. The switches support a generous Power-over-Ethernet (PoE) distance – up to 250 meters – minimizing both network investment and maintenance efforts. Additionally, their 8-core technology guarantees stable power to the switches.



NS-0105P-35(B)
Unmanaged PoE Switch

- L2, Unmanaged
- 4 * 100 M PoE port
- 1 * 100 M uplink port
- 802.3af and 802.3at
- 35 W PoE power budget
- Max. 250-meter long-distance transmission



NS-0109P-60(B)
Unmanaged PoE Switch

- L2, Unmanaged
- 8 * 100 M PoE port
- 1 * 100 M uplink port
- 802.3af and 802.3at
- 60 W PoE power budget
- Max. 250-meter long-distance transmission



NS-0318P-130(B)
Unmanaged PoE Switch

- L2, Unmanaged
- 16 * 100 M PoE port
- 1 * 1000 M RJ45
- 1 * 1000 M SFP
- 802.3af and 802.3at
- 130 W PoE power budget
- "Extend" Mode: Port 9-16, max. 250-meter long-distance transmission



NS-0326P-230(B)
Unmanaged PoE Switch

- L2, Unmanaged
- 24 * 100 M PoE port
- 1 * 1000 M RJ45
- 1 * 1000 M SFP
- 802.3af and 802.3at
- 230 W PoE power budget
- "Extend" Mode: Port 17-24, max. 250-meter long-distance transmission



CC-CA2C-200B
Coaxial Cable with Power Cable

- 200-meter RG59 coaxial cable with power cable
- Conductor material of coaxial cable: Oxygen Free Copper (OFC)
- Braiding material of coaxial cable: Copper-clad Aluminum (CCA)
- Conductor material of power cable: Oxygen Free Copper (OFC)
- VW-1 flame-retardant rating
- Excellent anti-interference performance



CC-CA-200B
Coaxial Cable

- 200-meter RG59 coaxial cable
- Conductor material: Oxygen Free Copper (OFC)
- Braiding material: Copper-clad Aluminum (CCA)
- VW-1 flame-retardant rating
- Excellent anti-interference performance
- Excellent anti-aging performance



NC-6AU-W
CCA Cat 6 Network Cable

- 0.585-mm diameter, 305-meter length
- Cat.6 UTP PVC
- CCA



Brackets of Network Cameras					
B1 Series Fixed-lens Bullet	HIA-J101 Junction box				
D1 Series Fixed-lens Dome	HIA-J204 Inclined ceiling mount	HIA-B401-110 Wall mount	HIA-B401-110B Wall mount	HIA-B101-110 Pendant mount	HIA-B201 Corner mount
	HIA-P101 Rain shade	HIA-P103 Rain shade	HIA-J104-DM18 Junction box	HIA-B403 Wall mount	
T2 Series Fixed-lens Turret	HIA-B301 Vertical pole mount	HIA-B201 Corner mount	HIA-B401-110T Wall mount	HIA-J102 Junction box	
B6 Series Varifocal Bullet	HIA-B301 Vertical pole mount	HIA-J102 Junction box	HIA-J105 Junction box	HIA-B201 Corner mount	
D6 Series Varifocal Dome	HIA-B101-135 Pendant mount	HIA-B402-135 Wall mount	HIA-B402-135B Wall mount with junction box	HIA-B302 Vertical pole mount	HIA-B202 Corner mount

	HIA-B501 In-ceiling mount	HIA-J104-DM21 Junction box	HIA-J203-DM23 Inclined ceiling mount	HIA-P102 Rain shade	HIA-P103 Rain shade
	HIA-B404 Wall mount	D20-AP Adapter plate			
D7 Series Varifocal Dome	HIA-B401-120 Wall mount	HIA-B401-120B Wall mount	HIA-B101-120 Pendant mount	HIA-B201 Corner mount	HIA-B301 Vertical pole mount
	HIA-J104-DM46 Junction box				
T6 series Varifocal Turret	HIA-B402-130T Wall mount	HIA-B101-130T Pendant mount	HIA-B301 Vertical pole mount	HIA-B201 Corner mount	HIA-J103 Junction box
	HIA-J202 Inclined ceiling mount				



Brackets of Turbo HD Cameras








T1 (P) (M) Series Mini Turret	HIA-B301 Vertical pole mount	HIA-B201 Corner mount	HIA-J101 Junction box	HIA-B401-110T Wall mount	
T2 (P) Series Turret	HIA-B301 Vertical pole mount	HIA-B201 Corner mount	HIA-J102 Junction box	HIA-J201 Inclined ceiling mount	HIA-B401-110T Wall mount
T2 (M) Series Turret	HIA-B301 Vertical pole mount	HIA-B201 Corner mount	HIA-J103 Junction box	HIA-J202 Inclined ceiling mount	HIA-B402-130T Wall mount
T3 Series Varifocal Turret	HIA-B301 Vertical pole mount	HIA-B201 Corner mount	HIA-J103 Junction box	HIA-J202 Inclined ceiling mount	HIA-B402-130T Wall mount
	HIA-B101-130T Pendant mount				
B1/B2 Series Mini Bullet	HIA-J101 Junction box				

B3 Series Varifocal Bullet	HIA-B301 Vertical pole mount	HIA-B201 Corner mount	HIA-J102 Junction box		
D3 Series Varifocal Dome	HIA-B301 Vertical pole mount	HIA-B201 Corner mount	HIA-J104-DM45 Junction box	HIA-J203-DM45 Inclined ceiling mount	HIA-B402-DM45 Wall mount
	HIA-B101-DM45 Pendant mount	HIA-P102 Rain shade			

Brackets of PTZ Cameras

2-inch PTZ	HIA-B404-PT Wall mount				
PanoVu Mini	HIA-B404-T Wall mount	HIA-B101-PT10 Pendant mount			
4-inch PTZ	HIA-B171 Pendant mount	HIA-B172 Pendant mount	HIA-B173 Ceiling mount	HIA-B473 Parapet wall mount	HIA-B471 Wall mount with junction box



				
HIA-B471-P	HIA-B471-C	HIA-B471-B	HIA-B471-BP	HIA-B471-BC
Vertical pole mount	Corner mount	Wall mount with junction box	Vertical pole mount with junction box	Wall mount with junction box
				
HIA-B371	HIA-B472			
Gooseneck mount	Wall mount (short arm)			

Headquarters

No.555 Qianmo Road, Binjiang District,
Hangzhou 310051, China
T +86-571-8807-5998
Business: overseasbusiness@hikvision.com
Technical Support: support@hikvision.com

Hikvision Australia
T +61-2-8599-4233
salesau@hikvision.com

Hikvision Azerbaijan
T +994 50 369 81 57

Hikvision Brazil
T +55-11-3318-0050
Latam.support@hikvision.com

Hikvision Canada
T +1-866-200-6690
sales.canada@hikvision.com

Hikvision Colombia
sales.colombia@hikvision.com

Hikvision Czech
T +420 29 6182640
info.cz@hikvision.com

Hikvision Europe
T +31-23-5542770
isales.eu@hikvision.com

Hikvision France
T +33 1-85-330-450
info.fr@hikvision.com

Hikvision Germany
T +49-69-401507290
sales.adch@hikvision.com

Hikvision India
T +91-22-28469900
sales@pramahikvision.com

Hikvision Indonesia
T +62-21-2933759
sales.Indonesia@hikvision.com

Hikvision Israel
T +972-79-5555590
sales.israel@hikvision.com

Hikvision Italy
T +39-0438-6902
info.it@hikvision.com

Hikvision Kazakhstan
T +7-727-9730667
nikia.panfilov@hikvision.ru

Hikvision Korea
T +82-(0)31-731-8817
sales.korea@hikvision.com

Hikvision Malaysia
T +601-7652-2413
sales.my@hikvision.com

Hikvision Mexico
T +52 55 2624 0110
sales.mexico@hikvision.com

Hikvision Pakistan
T +92-2135147526
support.pk@hikvision.com

Hikvision Philippines
sales.ph@hikvision.com

Hikvision Poland
T +48-22-460-01-50
info.pl@hikvision.com

Hikvision Romania
marketing.ro@hikvision.com

Hikvision Russia
T +7-495-669-67-99
saleru@hikvision.com

Hikvision Singapore
T +65-6684-4718
sg@hikvision.com

Hikvision South Africa
T +27877018113
sale.africa@hikvision.com

Hikvision Spain
T +34-91-737-16-55
info.es@hikvision.com

Hikvision Tashkent
T +99-87-1238-9438
uzb@hikvision.ru

Hikvision Thailand
T +662-275-9949
sales.thailand@hikvision.com

Hikvision Turkey
T +90 216 521 70 (70/71/72/73/74)
sales.tr@hikvision.com

Hikvision UAE
T +971-4-4432090
salesme@hikvision.com

Hikvision UK & Ireland
T +01628-902140
sales.uk@hikvision.com

Hikvision USA
T +1-909-895-0400
sales.usa@hikvision.com

Hikvision Vietnam
T +84-974270888
sales.vt@hikvision.com